

SELECTION

FAST MOVING
CATALOGUE

2019 - 2020



FAST MOVING CATALOGUE

2019-2020



www.scame.com

Our fifty-year old history of continuous research and development, which started from an insulated nail, a product that is as simple as the winning idea that generated it, has led to the development of more than 20,000 products suited for meeting all kind of needs in any installation environment. This catalogue is aimed at presenting a summary of **SCAME**'s product range, so as to make it easier to make the choices imposed by daily needs in terms of products which are crucial for the installation of a safe and modern electrical system.

SCAME's complete offer can always be consulted through the comprehensive thematic catalogues as well as on the Internet at www.scame.com.

INDEX	PAGE 2
COMPANY	PAGE 4
CATALOGUE	PAGE 6
PRODUCTS CATALOGUE	
INDEX BY PRODUCT NUMBER	PAGE 83

1	INDUSTRIAL PLUGS AND SOCKETS	page 6
	- Plugs and sockets >50V	page 8
	- Plugs and sockets <50V	page 22
	- Domestic standard sockets	page 24
2	SWITCHED INTERLOCKED SOCKET OUTLETS	page 26
	- Switched interlocked socket outlets OMNIA	page 28
	- Switched interlocked socket outlets ADVANCE2	page 34
	- Switched interlocked socket outlets ADVANCE-GRP	page 38
3	EMPTY ENCLOSURES	page 44
	- Distribution assemblies	page 46
	- Aluminium junction boxes	page 54
	- Junction boxes	page 56
4	SWITCHGEARS	page 60
5	INDUSTRIAL ADAPTORS	page 66
6	WEATHERPROOF WIRING ACCESSORIES	page 70
	- Weatherproof switches and sockets	page 71
7	INSTALLATION ACCESSORIES	page 74

The company

“ In over **fifty years** we have built an **industrial reality** that has always maintained the spirit of its **origins** ”



Stefano Scainelli CEO



SCAME PARRE S.p.A. is an Italian manufacturer of components and systems for low voltage electrical installations, in the residential and industrial fields.

Since 1963, the year it was founded, SCAME has grown to be an international group with a workforce of 650 employees at the three facilities located in the province of Bergamo, Italy, where the company's headquarters and main production lines have always been. The company also operates abroad, with 18 sales offices and branches, three of which are also production facilities.

In over 50 years of activity, it has kept its original spirit intact, spreading its values and distributing its products on the domestic market and, starting in the early 1970s, in over 80 foreign countries spread over 5 continents, currently achieving a consolidated yearly turnover of more than € 100 million.

THE CONCEPT OF QUALITY IS AN INTEGRAL PART OF OUR CULTURE IN ALL ASPECTS AND EVERY ACTIVITY OF OUR WORK.





SCAME
electrical solutions
Italy, Parre (Bergamo)



SCAME^{ARGENTINA}
Argentina

SCAME^{BULGARIA}
Bulgaria

SCAME^{BRASIL}
Brazil

SCAME^{CHILE}
Chile

SCAME-TOP
China

SCAME-CZ
Czech Republic

SOBEM **SCAME**
France

SCAME^{INDIA}
India

SCAME^{POLSKA}
Poland

SCAME^{PORTUGAL}
Portugal

SCAME-RO
Romania

SCAME-SK
Slovakia

SCAME^{IBERICA}
Spain

SCAME^{MIDDLE EAST}
U.A.E.

SCAME-UK
United Kingdom

SCAME-UY
Uruguay

SCAME-UA
Ukraine

1

INDUSTRIAL PLUGS AND SOCKETS

- Plugs and sockets >50V
- Plugs and sockets <50V
- Domestic standard sockets



SCAME has dedicated more than 35 years of its 55 years of activity to the development of IEC standard industrial connectors.



Since the very first series presented in 1982, to the SNAP-ON revolution introduced as a preview in the mid-1990s with the legendary EUREKA Series, the accumulated know-how has materialised today in the **OPTIMA** Series, a complete range of industrial plugs and sockets for currents from 16 up to 125A. Sturdy and safe products thanks to the use of enclosures made of high-performance techno-polymers and to the external cable gland with cable clamp function in the mobile versions.

Easy to wire thanks to the opening of the plug – socket body facilitated through a steel snap-on mechanism in order to guarantee constant performance over time.

Versatile thanks to the multiple solutions adopted for the terminals: screw, spring, insulation-piercing for currents up to 32A and mantle type in the versions from 63 to 125A, so as to always guarantee the most appropriate connection based on the type of use and on wiring needs.

Performance is ensured thanks to the use of nickel-plated brass pins to guarantee electrical contacts that are always efficient. Functional thanks to the installation of devices such as the phase inverter, available on the REVERSE versions. Respectful of man and of the environment thanks to the choice of halogen-free materials.

In the following pages, you will find a selection of the wide range of industrial connectors offered by Scame, suited to meeting all kinds of needs in the tertiary, industrial and worksite sectors, either as stand-alone products and as a natural addition to the distribution boards which are part of SCAME's range.



OPTIMA Series
from page 8



Where the crucial thing is to exclusively guarantee reliable connections, SCAME's product offer is completed by the plugs and sockets of the **XENIA** Series: no compromise in terms of performance, but dedicated technical characteristics instead, such as the sturdy one-piece body in techno-polymers, which make it the ideal choice in situations where the essential is everything.



XENIA Series
from page 8



Oftentimes, industrial facilities or worksites also need to use small single-phase equipment such as drills or milling cutters.

In order to meet this need, the **DOMO** and **DOMOPLUS** Series, which can be incorporated in SCAME's distribution assemblies, offer domestic sockets in the main Italian and international standards, with a level of protection of up to IP66 with the plug plugged in, traditionally a feature of industrial connectors.



DOMO and
DOMOPLUS Series
from page 24

PLUGS

OPTIMA Series



Poles	Volt	Hz.	h.	16A		16A	
2P+E	100-130	50/60	4	213.1630	10/50	213.1630P	10/50
2P+E	200-250	50/60	6	213.1633	10/50	213.1633P	10/50
3P+E	380-415	50/60	6	213.1636	10/50	213.1636P	10/50
3P+N+E	346-415	50/60	6	213.1637	10/50	213.1637P	10/50

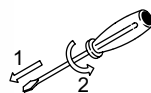
Poles	Volt	Hz.	h.	32A		32A	
2P+E	100-130	50/60	4	213.3230	10/40	213.3230F	10/40
2P+E	200-250	50/60	6	213.3233	10/40	213.3233F	10/40
3P+E	380-415	50/60	6	213.3236	10/40	213.3236F	10/40
3P+N+E	346-415	50/60	6	213.3237	10/40	213.3237F	10/40



Poles	Volt	Hz.	h.	63A	
2P+E	200-250	50/60	6	213.6333	6/24
3P+E	380-415	50/60	6	213.6336	6/24
3P+N+E	346-415	50/60	6	213.6337	6/24

PLUGS

OPTIMA-REVERSE Series



WITH PHASE INVERTER

Poles	Volt	Hz.	h.	16A	
3P+E	380-415	50/60	6	213.1636RV	10/50
3P+N+E	346-415	50/60	6	213.1637RV	10/50

Poles	Volt	Hz.	h.	32A	
3P+E	380-415	50/60	6	213.3236RV	10/40
3P+N+E	346-415	50/60	6	213.3237RV	10/40

PLUGS

XENIA Series



Poles	Volt	Hz.	h.	16A	
2P+E	100-130	50/60	4	214.1630	10/50
2P+E	200-250	50/60	6	214.1633	10/50
3P+E	380-415	50/60	6	214.1636	10/50
3P+N+E	346-415	50/60	6	214.1637	10/50

Poles	Volt	Hz.	h.	32A	
2P+E	100-130	50/60	4	214.3230	10/40
2P+E	200-250	50/60	6	214.3233	10/40
3P+E	380-415	50/60	6	214.3236	10/40
3P+N+E	346-415	50/60	6	214.3237	10/40

PHASE INVERTER

Mobile plugs and inlets invert two phases in order to return to the correct direction of rotation of three-phase motors.



The phases are inverted by simply pushing and turning the phase pin support with a screwdriver.

CONNECTORS

OPTIMA Series



Poles	Volt	Hz.	h.	16A		16A	
2P+E	100-130	50/60	4	313.1640	10/50	313.1640P	10/50
2P+E	200-250	50/60	6	313.1643	10/50	313.1643P	10/50
3P+E	380-415	50/60	6	313.1646	10/50	313.1646P	10/50
3P+N+E	346-415	50/60	6	313.1647	10/50	313.1647P	10/50

Poles	Volt	Hz.	h.	32A		32A	
2P+E	100-130	50/60	4	313.3240	10/40	313.3240F	10/40
2P+E	200-250	50/60	6	313.3243	10/40	313.3243F	10/40
3P+E	380-415	50/60	6	313.3246	10/40	313.3246F	10/40
3P+N+E	346-415	50/60	6	313.3247	10/40	313.3247F	10/40



Pole	Volt	Hz.	h.	63A	
2P+T	200-250	50/60	6	313.6343	6/24
3P+T	380-415	50/60	6	313.6346	6/24
3P+N+T	346-415	50/60	6	313.6347	6/24

TERMINALS



FAST WIRING - Anti vibrations



FAST WIRING



Optimal connections for high currents.

CONNECTORS

XENIA Series



Poles	Volt	Hz.	h.	16A	
2P+E	100-130	50/60	4	314.1640	10/50
2P+E	200-250	50/60	6	314.1643	10/50
3P+E	380-415	50/60	6	314.1646	10/50
3P+N+E	346-415	50/60	6	314.1647	10/50

Poles	Volt	Hz.	h.	32A	
2P+E	100-130	50/60	4	314.3240	10/40
2P+E	200-250	50/60	6	314.3243	10/40
3P+E	380-415	50/60	6	314.3246	10/40
3P+N+E	346-415	50/60	6	314.3247	10/40

DOMESTIC STANDARD PLUG AND SOCKETS

The range of splashproof products for uses in the domestic and tertiary sectors is completed by the **QUICK** Series mobile plug and sockets. Inconspicuous, thanks to their black colour that makes them go unnoticed, they are also practically indestructible thanks to the sturdy rubber housing with excellent grip, whilst the IP44 protection rating makes them suitable for use in dusty and humid environments.

PLUG

QUICK Series



RUBBER HOUSING

Standard	Description		
French-German	16A 2P+E	110.3100	10/150

CONNECTORS

QUICK Series







RUBBER HOUSING





Standard	Description		
German	16A 2P+E	110.3150	10/150
French	16A 2P+E	110.3160	10/150

PLUGS



OPTIMA Series





Poles	Volt	Hz.	h.	16A 		16A 	
2P+E	100-130	50/60	4	218.1630	10/50	218.1630P	10/50
2P+E	200-250	50/60	6	218.1633	10/50	218.1633P	10/50
3P+E	380-415	50/60	6	218.1636	10/50	218.1636P	10/50
3P+N+E	346-415	50/60	6	218.1637	10/50	218.1637P	10/50

Poles	Volt	Hz.	h.	32A 		32A 	
2P+E	100-130	50/60	4	218.3230	10/40	218.3230F	10/40
2P+E	200-250	50/60	6	218.3233	10/40	218.3233F	10/40
3P+E	380-415	50/60	6	218.3236	10/40	218.3236F	10/40
3P+N+E	346-415	50/60	6	218.3237	10/40	218.3237F	10/40

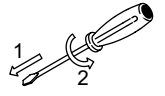


Poles	Volt	Hz.	h.	63A 	
2P+E	200-250	50/60	6	218.6333	6/24
3P+E	380-415	50/60	6	218.6336	6/24
3P+N+E	346-415	50/60	6	218.6337	6/24



Poles	Volt	Hz.	h.	125A 	
3P+E	380-415	50/60	6	218.12536	1/8
3P+N+E	346-415	50/60	6	218.12537	1/8



PLUGS

OPTIMA-REVERSE Series



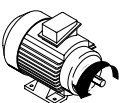
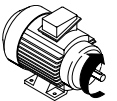
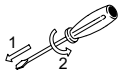
WITH PHASE INVERTER

Poles	Volt	Hz.	h.	16A 	
3P+E	380-415	50/60	6	218.1636RV	10/50
3P+N+E	346-415	50/60	6	218.1637RV	10/50

Poles	Volt	Hz.	h.	32A 	
3P+E	380-415	50/60	6	218.3236RV	10/40
3P+N+E	346-415	50/60	6	218.3237RV	10/40

PHASE INVERTER

Mobile plugs and inlets which rapidly invert two phases in order to return to the correct direction of rotation of three-phase motors.



The phases are inverted by simply pushing and turning the phase pin support with a screwdriver.

CONNECTORS

OPTIMA Series



Poles	Volt	Hz.	h.	16A		16A	
2P+E	100-130	50/60	4	318.1640	10/50	318.1640P	10/50
2P+E	200-250	50/60	6	318.1643	10/50	318.1643P	10/50
3P+E	380-415	50/60	6	318.1646	10/50	318.1646P	10/50
3P+N+E	346-415	50/60	6	318.1647	10/50	318.1647P	10/50

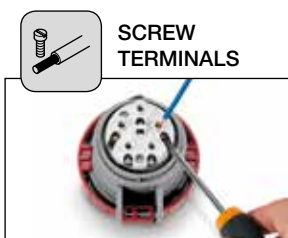
Poles	Volt	Hz.	h.	32A		32A	
2P+E	100-130	50/60	4	318.3240	10/40	318.3240F	10/40
2P+E	200-250	50/60	6	318.3243	10/40	318.3243F	10/40
3P+E	380-415	50/60	6	318.3246	10/40	318.3246F	10/40
3P+N+E	346-415	50/60	6	318.3247	10/40	318.3247F	10/40



Poles	Volt	Hz.	h.	63A	
2P+E	200-250	50/60	6	318.6343	6/24
3P+E	380-415	50/60	6	318.6346	6/24
3P+N+E	346-415	50/60	6	318.6347	6/24

Poles	Volt	Hz.	h.	125A	
3P+E	380-415	50/60	6	318.12546	1/8
3P+N+E	346-415	50/60	6	318.12547	1/8

TERMINALS



SCREW TERMINALS



SPRING TERMINALS

FAST WIRING - Anti vibrations



INSULATION PERFORATING TERMINALS

FAST WIRING



MANTLE TERMINALS

Optimal connections for high currents.

■ SURFACE MOUNTING APPLIANCE INLETS ANGLED BOX

OPTIMA Series



Poles	Volt	Hz.	h.	16A	
2P+E	100-130	50/60	4	240.1690	10
2P+E	200-250	50/60	6	240.1693	10
3P+E	380-415	50/60	6	240.1696	10
3P+N+E	346-415	50/60	6	240.1697	10

Poles	Volt	Hz.	h.	32A	
2P+E	100-130	50/60	4	240.3290	4
2P+E	200-250	50/60	6	240.3293	4
3P+E	380-415	50/60	6	240.3296	4
3P+N+E	346-415	50/60	6	240.3297	4

■ SURFACE MOUNTING APPLIANCE INLETS ANGLED BOX

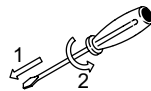
OPTIMA-TOP Series



Poles	Volt	Hz.	h.	63A	
2P+E	200-250	50/60	6	240.6393T	4
3P+E	380-415	50/60	6	240.6396T	4
3P+N+E	346-415	50/60	6	240.6397T	4

■ SURFACE MOUNTING APPLIANCE INLETS ANGLED BOX

OPTIMA-REVERSE Series



WITH PHASE INVERTER

Poles	Volt	Hz.	h.	16A	
3P+E	380-415	50/60	6	240.1696RV	10
3P+N+E	346-415	50/60	6	240.1697RV	10

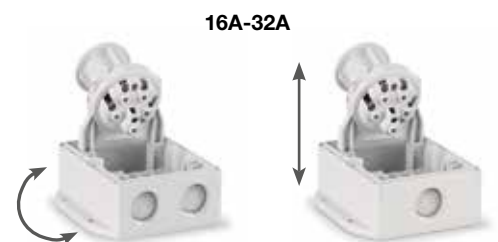
Poles	Volt	Hz.	h.	32A	
3P+E	380-415	50/60	6	240.3296RV	10
3P+N+E	346-415	50/60	6	240.3297RV	10



External fixing points.



TOP version: threaded break-through knockout cable entries.



TOP version: reversible base and removable socket for easy wiring and cable entry flexibility.

**SURFACE MOUNTING APPLIANCE INLETS
ANGLED BOX** OPTIMA Series



Poles	Volt	Hz.	h.	16A	
2P+E	100-130	50/60	4	245.1690	10
2P+E	200-250	50/60	6	245.1693	10
3P+E	380-415	50/60	6	245.1696	10
3P+N+E	346-415	50/60	6	245.1697	10

Poles	Volt	Hz.	h.	32A	
2P+E	100-130	50/60	4	245.3290	10
2P+E	200-250	50/60	6	245.3293	10
3P+E	380-415	50/60	6	245.3296	10
3P+N+E	346-415	50/60	6	245.3297	10

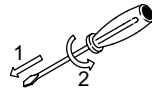
**SURFACE MOUNTING APPLIANCE INLETS
ANGLED BOX** OPTIMA-TOP Series



Poles	Volt	Hz.	h.	63A	
2P+E	200-250	50/60	6	245.6393T	4
3P+E	380-415	50/60	6	245.6396T	4
3P+N+E	346-415	50/60	6	245.6397T	4

Poles	Volt	Hz.	h.	125A	
3P+E	380-415	50/60	6	245.12596T	4
3P+N+E	346-415	50/60	6	245.12597T	4

**SURFACE MOUNTING APPLIANCE INLETS
ANGLED BOX** OPTIMA-REVERSE Series



WITH PHASE INVERTER

Poles	Volt	Hz.	h.	16A	
3P+E	380-415	50/60	6	245.1696RV	10
3P+N+E	346-415	50/60	6	245.1697RV	10

Poles	Volt	Hz.	h.	32A	
3P+E	380-415	50/60	6	245.3296RV	10
3P+N+E	346-415	50/60	6	245.3297RV	10

TERMINALS

**SCREW
TERMINALS**



**SPRING
TERMINALS**



FAST WIRING - Anti vibrations

**INSULATION
PERFORMING
TERMINALS**



FAST WIRING

**MANTLE
TERMINALS**



Optimal connections for high currents.

■ SURFACE MOUNTING SOCKET OUTLETS ANGLED BOX

OPTIMA Series



Poles	Volt	Hz.	h.	16A	
2P+E	100-130	50/60	4	512.1650	10/50
2P+E	200-250	50/60	6	512.1653	10/50
3P+E	380-415	50/60	6	512.1656	10/50
3P+N+E	346-415	50/60	6	512.1657	10/50

Poles	Volt	Hz.	h.	32A	
2P+E	100-130	50/60	4	512.3250	10/40
2P+E	200-250	50/60	6	512.3253	10/40
3P+E	380-415	50/60	6	512.3256	10/40
3P+N+E	346-415	50/60	6	512.3257	10/40

■ SURFACE MOUNTING SOCKET OUTLETS ANGLED BOX

OPTIMA-TOP Series



Poles	Volt	Hz.	h.	16A	
2P+E	100-130	50/60	4	513.1650T	10/40
2P+E	200-250	50/60	6	513.1653T	10/40
3P+E	380-415	50/60	6	513.1656T	10/40
3P+N+E	346-415	50/60	6	513.1657T	10/40

Poles	Volt	Hz.	h.	32A	
2P+E	100-130	50/60	4	513.3250T	10
2P+E	200-250	50/60	6	513.3253T	10
3P+E	380-415	50/60	6	513.3256T	10
3P+N+E	346-415	50/60	6	513.3257T	10

■ SURFACE MOUNTING SOCKET OUTLETS ANGLED BOX

OPTIMA-BASE Series



Poles	Volt	Hz.	h.	16A	
2P+E	100-130	50/60	4	513.1650	10/40
2P+E	200-250	50/60	6	513.1653	10/40
3P+E	380-415	50/60	6	513.1656	10/40
3P+N+E	346-415	50/60	6	513.1657	10/40

Poles	Volt	Hz.	h.	32A	
2P+E	100-130	50/60	4	513.3250	10
2P+E	200-250	50/60	6	513.3253	10
3P+E	380-415	50/60	6	513.3256	10
3P+N+E	346-415	50/60	6	513.3257	10



Poles	Volt	Hz.	h.	63A	
2P+E	200-250	50/60	6	513.6353T	4
3P+E	380-415	50/60	6	513.6356T	4
3P+N+E	346-415	50/60	6	513.6357T	4

■ SURFACE MOUNTING SOCKET OUTLETS ANGLED BOX

XENIA Series



Poles	Volt	Hz.	h.	16A	
2P+E	100-130	50/60	4	514.1650	10/40
2P+E	200-250	50/60	6	514.1653	10/40
3P+E	380-415	50/60	6	514.1656	10/40
3P+N+E	346-415	50/60	6	514.1657	10/40

Poles	Volt	Hz.	h.	32A	
2P+E	100-130	50/60	4	514.3250	10/40
2P+E	200-250	50/60	6	514.3253	10/40
3P+E	380-415	50/60	6	514.3256	10/40
3P+N+E	346-415	50/60	6	514.3257	10/40

■ SURFACE MOUNTING SOCKET OUTLETS STRAIGHT BOX

OPTIMA Series



Poles	Volt	Hz.	h.	16A	
2P+E	100-130	50/60	4	522.1650	10/50
2P+E	200-250	50/60	6	522.1653	10/50
3P+E	380-415	50/60	6	522.1656	10/50
3P+N+E	346-415	50/60	6	522.1657	10/50

Poles	Volt	Hz.	h.	32A	
2P+E	100-130	50/60	4	522.3250	10/40
2P+E	200-250	50/60	6	522.3253	10/40
3P+E	380-415	50/60	6	522.3256	10/40
3P+N+E	346-415	50/60	6	522.3257	10/40

TERMINALS



SCREW TERMINALS



SPRING TERMINALS



FAST WIRING - Anti vibrations



INSULATION PERFORATING TERMINALS



FAST WIRING



MANTLE TERMINALS



Optimal connections for high currents.

■ SURFACE MOUNTING SOCKET OUTLETS ANGLED BOX

OPTIMA Series



Poles	Volt	Hz.	h.	16A	
2P+E	100-130	50/60	4	517.1650	10/50
2P+E	200-250	50/60	6	517.1653	10/50
3P+E	380-415	50/60	6	517.1656	10/50
3P+N+E	346-415	50/60	6	517.1657	10/40

Poles	Volt	Hz.	h.	32A	
2P+E	100-130	50/60	4	517.3250	10/40
2P+E	200-250	50/60	6	517.3253	10/40
3P+E	380-415	50/60	6	517.3256	10/40
3P+N+E	346-415	50/60	6	517.3257	10/40

■ SURFACE MOUNTING SOCKET OUTLETS ANGLED BOX

OPTIMA-TOP Series



Poles	Volt	Hz.	h.	16A	
2P+E	100-130	50/60	4	518.1650T	10/40
2P+E	200-250	50/60	6	518.1653T	10/40
3P+E	380-415	50/60	6	518.1656T	10/40
3P+N+E	346-415	50/60	6	518.1657T	10/40

Poles	Volt	Hz.	h.	32A	
2P+E	100-130	50/60	4	518.3250T	10
2P+E	200-250	50/60	6	518.3253T	10
3P+E	380-415	50/60	6	518.3256T	10
3P+N+E	346-415	50/60	6	518.3257T	10



Poles	Volt	Hz.	h.	63A	
2P+E	200-250	50/60	6	518.6353T	4
3P+E	380-415	50/60	6	518.6356T	4
3P+N+E	346-415	50/60	6	518.6357T	4

Poles	Volt	Hz.	h.	125A	
3P+E	380-415	50/60	6	518.12556T	4
3P+N+E	346-415	50/60	6	518.12557T	4

TERMINALS



SCREW
TERMINALS



SPRING
TERMINALS



FAST WIRING - Anti vibrations



INSULATION
PERFORATING
TERMINALS



FAST WIRING



MANTLE
TERMINALS



Optimal connections for high currents.

■ SURFACE MOUNTING SOCKET OUTLETS STRAIGHT BOX

OPTIMA Series



Poles	Volt	Hz.	h.	16A	
2P+E	100-130	50/60	4	527.1650	10/50
2P+E	200-250	50/60	6	527.1653	10/50
3P+E	380-415	50/60	6	527.1656	10/50
3P+N+E	346-415	50/60	6	527.1657	10/50

Poles	Volt	Hz.	h.	32A	
2P+E	100-130	50/60	4	527.3250	10/40
2P+E	200-250	50/60	6	527.3253	10/40
3P+E	380-415	50/60	6	527.3256	10/40
3P+N+E	346-415	50/60	6	527.3257	10/40

APPLICATION EXAMPLE



FLUSH MOUNTING APPLIANCE INLETS OPTIMA Series



FLANGE 75x75

Poles	Volt	Hz.	h.	16A	
2P+E	100-130	50/60	4	243.1690	10/50
2P+E	200-250	50/60	6	243.1693	10/50
3P+E	380-415	50/60	6	243.1696	10/50
3P+N+E	346-415	50/60	6	243.1697	10/50

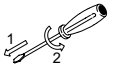
Poles	Volt	Hz.	h.	32A	
2P+E	100-130	50/60	4	243.3290	10/50
2P+E	200-250	50/60	6	243.3293	10/50
3P+E	380-415	50/60	6	243.3296	10/50
3P+N+E	346-415	50/60	6	243.3297	10/40



FLANGE 100x110

Poles	Volt	Hz.	h.	63A	
2P+E	200-250	50/60	6	243.6393	10
3P+E	380-415	50/60	6	243.6396	10
3P+N+E	346-415	50/60	6	243.6397	10

FLUSH MOUNTING APPLIANCE INLETS OPTIMA-REVERSE Series



WITH PHASE INVERTER
FLANGE 75x75

Poles	Volt	Hz.	h.	16A	
3P+E	380-415	50/60	6	243.1696RV	10/50
3P+N+E	346-415	50/60	6	243.1697RV	10/40

Poles	Volt	Hz.	h.	32A	
3P+E	380-415	50/60	6	243.3296RV	10/50
3P+N+E	346-415	50/60	6	243.3297RV	10/40

FLUSH MOUNTING APPLIANCE INLETS 90° ANGLED

EUREKA Series



FLANGE 70x87

Poles	Volt	Hz.	h.	16A	
2P+E	100-130	50/60	4	242.1690	10/100
2P+E	200-250	50/60	6	242.1693	10/100
3P+E	380-415	50/60	6	242.1696	10/100
3P+N+E	346-415	50/60	6	242.1697	10/100

Poles	Volt	Hz.	h.	32A	
2P+E	100-130	50/60	4	242.3290	10/100
2P+E	200-250	50/60	6	242.3293	10/100
3P+E	380-415	50/60	6	242.3296	10/100
3P+N+E	346-415	50/60	6	242.3297	10/100

SPECIAL APPLICATIONS



OPTIMA Series plug and sockets are also available in black colour, just add ".K" at the end of the part number P.g. 213.1633.K.

FLUSH MOUNTING APPLIANCE INLETS OPTIMA Series



FLANGE 75x75

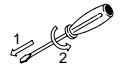
Poles	Volt	Hz.	h.	16A	
2P+E	100-130	50/60	4	248.1690	10/50
2P+E	200-250	50/60	6	248.1693	10/50
3P+E	380-415	50/60	6	248.1696	10/50
3P+N+E	346-415	50/60	6	248.1697	10/50

Poles	Volt	Hz.	h.	32A	
2P+E	100-130	50/60	4	248.3290	10/50
2P+E	200-250	50/60	6	248.3293	10/50
3P+E	380-415	50/60	6	248.3296	10/50
3P+N+E	346-415	50/60	6	248.3297	10/50

FLUSH MOUNTING APPLIANCE INLETS OPTIMA-REVERSE Series



WITH PHASE INVERTER
FLANGE 75x75



Poles	Volt	Hz.	h.	16A	
3P+E	380-415	50/60	6	248.1696RV	10/50
3P+N+E	346-415	50/60	6	248.1697RV	10/50

Poles	Volt	Hz.	h.	32A	
3P+E	380-415	50/60	6	248.3296RV	10/50
3P+N+E	346-415	50/60	6	248.3297RV	10/50

FLUSH MOUNTING APPLIANCE INLETS 90° ANGLED EUREKA Series



FLANGE 70x87

Poles	Volt	Hz.	h.	16A	
2P+E	100-130	50/60	4	247.1690	10/100
2P+E	200-250	50/60	6	247.1693	10/100
3P+E	380-415	50/60	6	247.1696	10/60
3P+N+E	346-415	50/60	6	247.1697	10/50

Poles	Volt	Hz.	h.	32A	
2P+E	100-130	50/60	4	247.3290	10/40
2P+E	200-250	50/60	6	247.3293	10/40
3P+E	380-415	50/60	6	247.3296	10/40
3P+N+E	346-415	50/60	6	247.3297	10/40

ACCESSORIES



Plugs cap
page 25

TERMINALS



SCREW
TERMINALS



SPRING
TERMINALS



FAST WIRING - Anti vibrations



INSULATION
PERFORATING
TERMINALS



FAST WIRING



MANTLE
TERMINALS



Optimal connections for high currents.

FLUSH MOUNTING SOCKET OUTLETS ANGLED OUTLET

OPTIMA Series



FLANGE 70x87

Poles	Volt	Hz.	h.	16A		16A	
2P+E	100-130	50/60	4	413.1660	10/100	413.1660F	10/100
2P+E	200-250	50/60	6	413.1663	10/100	413.1663F	10/100
3P+E	380-415	50/60	6	413.1666	10/100	413.1666F	10/100
3P+N+E	346-415	50/60	6	413.1667	10/100	413.1667F	10/100

FLANGE 84x106

Poles	Volt	Hz.	h.	32A		32A	
2P+E	100-130	50/60	4	413.3260	10/50	413.3260F	10/50
2P+E	200-250	50/60	6	413.3263	10/50	413.3263F	10/50
3P+E	380-415	50/60	6	413.3266	10/50	413.3266F	10/50
3P+N+E	346-415	50/60	6	413.3267	10/50	413.3267F	10/50



FLANGE 100x110

Poles	Volt	Hz.	h.	63A	
2P+E	200-250	50/60	6	413.6363	6/30
3P+E	380-415	50/60	6	413.6366	6/30
3P+N+E	346-415	50/60	6	413.6367	6/30

FLUSH MOUNTING SOCKET OUTLETS STRAIGHT OUTLET

OPTIMA Series



FLANGE 75x75

Poles	Volt	Hz.	h.	16A	
2P+E	100-130	50/60	4	423.1660	10/100
2P+E	200-250	50/60	6	423.1663	10/100
3P+E	380-415	50/60	6	423.1666	10/100
3P+N+E	346-415	50/60	6	423.1667	10/100

FLANGE 75x75

Poles	Volt	Hz.	h.	32A	
2P+E	100-130	50/60	4	423.3260	10/50
2P+E	200-250	50/60	6	423.3263	10/50
3P+E	380-415	50/60	6	423.3266	10/50
3P+N+E	346-415	50/60	6	423.3267	10/50



FLANGE 100x110

Poles	Volt	Hz.	h.	63A	
2P+E	200-250	50/60	6	423.6363	6/30
3P+E	380-415	50/60	6	423.6366	6/30
3P+N+E	346-415	50/60	6	423.6367	6/30



Empty surface
mounting boxes
page 25



Enclosures
page 46

FLUSH MOUNTING SOCKET OUTLETS ANGLED OUTLET

OPTIMA Series



FLANGE 70x87

Poles	Volt	Hz.	h.	16A		16A	
2P+E	100-130	50/60	4	418.1660	10/100	418.1660F	10/100
2P+E	200-250	50/60	6	418.1663	10/100	418.1663F	10/100
3P+E	380-415	50/60	6	418.1666	10/100	418.1666F	10/100
3P+N+E	346-415	50/60	6	418.1667	10/100	418.1667F	10/100

FLANGE 84x106

Poles	Volt	Hz.	h.	32A		16A	
2P+E	100-130	50/60	4	418.3260	10/50	418.3260F	10/50
2P+E	200-250	50/60	6	418.3263	10/50	418.3263F	10/50
3P+E	380-415	50/60	6	418.3266	10/50	418.3266F	10/50
3P+N+E	346-415	50/60	6	418.3267	10/50	418.3267F	10/50



FLANGE 100x110

Poles	Volt	Hz.	h.	63A	
2P+E	200-250	50/60	6	418.6363	6/30
3P+E	380-415	50/60	6	418.6366	6/30
3P+N+E	346-415	50/60	6	418.6367	6/30

FLANGE 114x114

Poles	Volt	Hz.	h.	125A	
3P+E	380-415	50/60	6	418.12566	1/10
3P+N+E	346-415	50/60	6	418.12567	1/10

FLUSH MOUNTING SOCKET OUTLETS STRAIGHT OUTLET

OPTIMA Series



FLANGE 75x75

Poles	Volt	Hz.	h.	16A	
2P+E	100-130	50/60	4	428.1660	10/100
2P+E	200-250	50/60	6	428.1663	10/100
3P+E	380-415	50/60	6	428.1666	10/100
3P+N+E	346-415	50/60	6	428.1667	10/100

FLANGE 75x75

Poles	Volt	Hz.	h.	32A	
2P+E	100-130	50/60	4	428.3260	10/50
2P+E	200-250	50/60	6	428.3263	10/50
3P+E	380-415	50/60	6	428.3266	10/50
3P+N+E	346-415	50/60	6	428.3267	10/50



FLANGE 100x110

Poles	Volt	Hz.	h.	63A	
2P+E	200-250	50/60	6	428.6363	6/30
3P+E	380-415	50/60	6	428.6366	6/30
3P+N+E	346-415	50/60	6	428.6367	6/30

FLANGE 114x114

Poles	Volt	Hz.	h.	125A	
3P+E	380-415	50/60	6	428.12566	1/10
3P+N+E	346-415	50/60	6	428.12567	1/10

TERMINALS



SCREW
TERMINALS



SPRING
TERMINALS



FAST WIRING - Anti vibrations



INSULATION
PERFORATING
TERMINALS



FAST WIRING



MANTLE
TERMINALS



Optimal connections for high currents.

PLUGS

IEC309 Series



Poles	Volt	Hz.	h.	16A	
2P	20-25	50/60	-	230.1600	10/100
2P	40-50	50/60	12	230.1601	10/100
3P	20-25 40-50	100-200	4	230.16030	10/100

Poles	Volt	Hz.	h.	32A	
2P	20-25	50/60	-	230.3200	10/100
2P	40-50	50/60	12	230.3201	10/100
3P	20-25 40-50	100-200	4	230.32030	10/100

CONNECTORS

IEC309 Series



Poles	Volt	Hz.	h.	16A	
2P	20-25	50/60	-	330.1605	10/100
2P	40-50	50/60	12	330.1606	10/100
3P	20-25 40-50	100-200	4	330.16080	10/100

Poles	Volt	Hz.	h.	32A	
2P	20-25	50/60	-	330.3205	10/100
2P	40-50	50/60	12	330.3206	10/100
3P	20-25 40-50	100-200	4	330.32080	10/100

APPLICATION EXAMPLE



FLUSH MOUNTING SOCKET OUTLETS

IEC309 Series



FLANGE 70x87					
Poles	Volt	Hz.	h.	16A	
2P	20-25	50/60	-	430.1615	10/100
2P	40-50	50/60	12	430.1616	10/100
3P	20-25 40-50	100-200	4	430.16180	10/100

FLANGE 70x87					
Poles	Volt	Hz.	h.	32A	
2P	20-25	50/60	-	430.3215	10/100
2P	40-50	50/60	12	430.3216	10/100
3P	20-25 40-50	100-200	4	430.32180	10/100

PLUGS

IEC309 Series



Poles	Volt	Hz.	h.	16A	
2P	20-25	50/60	-	235.1600	10/100
2P	40-50	50/60	12	235.1601	10/100
3P	20-25 40-50	100-200	4	235.16030	10/100

Poles	Volt	Hz.	h.	32A	
2P	20-25	50/60	-	235.3200	10/100
2P	40-50	50/60	12	235.3201	10/100
3P	20-25 40-50	100-200	4	235.32030	10/100

CONNECTORS

IEC309 Series



Poles	Volt	Hz.	h.	16A	
2P	20-25	50/60	-	335.1605	10/100
2P	40-50	50/60	12	335.1606	10/100
3P	20-25 40-50	100-200	4	335.16080	10/100

Poles	Volt	Hz.	h.	32A	
2P	20-25	50/60	-	335.3205	10/100
2P	40-50	50/60	12	335.3206	10/100
3P	20-25 40-50	100-200	4	335.32080	10/100

APPLICATION EXAMPLE



FLUSH MOUNTING SOCKET OUTLETS

IEC309 Series



FLANGE 70x87					
Poles	Volt	Hz.	h.	16A	
2P	20-25	50/60	-	435.1615	10/100
2P	40-50	50/60	12	435.1616	10/100
3P	20-25 40-50	100-200	4	435.16180	10/100

FLANGE 70x87					
Poles	Volt	Hz.	h.	32A	
2P	20-25	50/60	-	435.3216	10/100
2P	40-50	50/60	12	435.3226	10/100
3P	20-25 40-50	100-200	4	435.32180	10/100

TERMINALS



SCREW
TERMINALS



SPRING
TERMINALS



FAST WIRING - Anti vibrations



INSULATION
PERFORATING
TERMINALS



FAST WIRING



MANTLE
TERMINALS



Optimal connections for high currents.

Domestic standard sockets

FLUSH MOUNTING DOMESTIC STANDARD SOCKET OUTLETS

DOMO Series



IP54

FLANGE 70x87

Standard	Description		
Italian P40	16A 2P+E	570.4051	10/100
French	16A 2P+E	570.4091	10/100
German unshutter	16A 2P+E	570.4061	10/100
British	13A 2P+E	570.4041	10/100
Argentine	10A 2P+E	570.4093	10/100
Brazilian	20A 2P+E	570.4092	10/100

EMPTY SURFACE MOUNTING BOXES

DOMO Series



FLANGE 70x87

Description	Cable inlet		
Straight box 16A with drilling point		570.0016	10/100
Angled box 16A threaded entry (cap/cable sleeve)	M20	570.0116.20	10
	M25	570.0116.25	11

FLUSH MOUNTING DOMESTIC STANDARD SOCKET OUTLETS

DOMOPLUS Series



IP66 with plug inserted

FLANGE 70x87

Standard	Description		
Italian P40	16A 2P+E	570.6405	10/100
French	16A 2P+E	570.6411	10/100
German shuttered	16A 2P+E	570.6407	10/100
British	13A 2P+E	570.6413	10/100
British	15A 2P+E	570.6414	10/100
Argentine	10A 2P+E	570.6424	10/100
New Zealand	10A 2P+E	570.6427	10/100
Swiss	10A 2P+E	570.6417	10/100
South African	16A 2P+E	570.6428	10/100
Brazilian	20A 2P+E	570.6421	10/100
Indian	6/16A 2P+E	570.6429	10/100

SURFACE MOUNTING BOXES

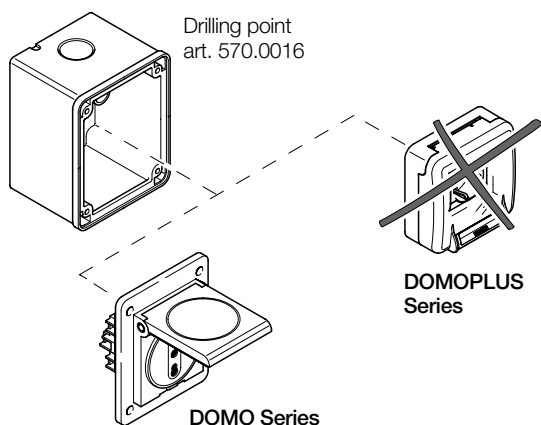
DOMOPLUS Series



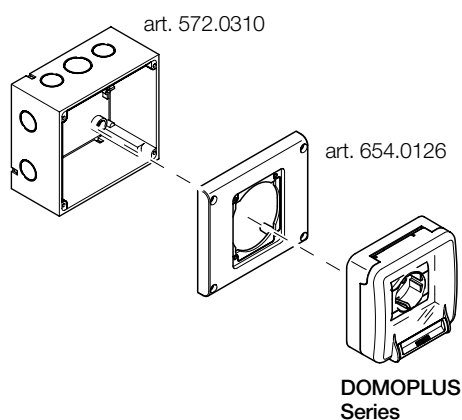
FLANGE 136x125

Description	Dimensions (mm)		
Surface mounting box	136x125x70	572.0310	10
Flange 70x87	136x125x15	654.0126	6

BOXES FLANGE 70x87



BOXES FLANGE 136x125



DOMOPLUS SERIES TECHNICAL CHARACTERISTICS

Tinted polycarbonate cover to see inside

Tilting device holder (Fixed with additional terminal strip for English version)

Fixing screws within the insulating gasket



A wing on the lid assists one-handed opening

Co injected gasket to guarantee total insulation

Specifically high formulated gel seal to preserve IP protection degree when the plug is inserted

■ SURFACE MOUNTING BOXES - IP67

DOMO Series



Description	Cable Inlet	Suitable for sockets	Flange (mm)	Cable inlet		☐
Straight box	Blank side with drilling point (cable sleeve)	16A	70x87	-	570.0016	10/100
		32A	84x106	-	570.0032	10
Angled box	Blank side with drilling point (cable sleeve)	16A	70x87	M20/M25	570.0116	10
		32A	84x106	M32	570.0132	10
	Threaded entry (cap/cable sleeve)	16A	70x87	M20x1,5	570.0116.20	10
		16A	70x87	M25x1,5	570.0116.25	10
		32A	84x106	M32x1,5	570.0132.32	10
		63A	100x110	M40x1,5	570.M0163	6
125A	114x114	M63x1,5	570.M0125	6		
Flange adaptor 75x75mm on 84x106mm					654.0108	5

- Supplied with socket fastening screws.

■ PLUGS CAP



Current	Poles		☐
16A	2P+E	570.90163	10/100
16A	3P+E	570.90164	10/100
16A	3P+N+E	570.90165	10/100
32A	2P+E / 3P+E	570.90324	10/100
32A	3P+N+E	570.90325	10/100
63A	2P+E / 3P+E / 3P+N+E	570.9063	10
125A	2P+E / 3P+E / 3P+N+E	570.90125	10

2

SWITCHED INTERLOCKED SOCKET OUTLETS

- Switched interlocked socket outlets OMNIA
- Switched interlocked socket outlets ADVANCE2
- Switched interlocked socket outlets ADVANCE-GRP



As of today, SCAME is the only company to develop a range of switched interlocked socket outlets intended to meet the needs of the tertiary sector up to environments with potentially explosive atmosphere, going from the worksite to heavy-duty industry.



The cornerstone of SCAME's range is the **OMNIA** Series, highly appreciated for its compact size and unparalleled flexibility of installation, thanks to the flush/wall mounting versions featuring single configuration or with up to 4 sockets by means of a system of modular bases, also available in the version with junction box or switchboard.

The ideal intended use of OMNIA products is in the tertiary sector, although the flange dimensions allow it to interact with the distribution boards of the Domino and Mbox Series, thus also making it a crucial element in industrial and worksite applications, by taking advantage of the modular nature that has always been the underlying feature of SCAME's systems.



OMNIA Series
from page 30



ADVANCE2 is the product developed by SCAME for application in strictly industrial environments, though it presents itself with a particularly elegant design that makes it eye-pleasing as well as functional.

Significantly simple to wire thanks to the cover that can be easily removed, since all electrical connections can be made on the base, where the control components, disconnectors and switches are installed.

All sockets are equipped with a high-performance disconnecter, ergonomic handles pre-set for locking by means of padlock and transparent overprinted window without the use of seals, which allows constant monitoring of the protective switches and guaranteed an IP66/IP67 protection rating.



ADVANCE2 Series
from page 34



In the case of extreme environmental conditions, such as in steel industries, shipyards, harbours or mines, nothing can equal the characteristics of **ADVANCE-GRP**. Thanks to the enclosure made of thermosetting material GRP (Glass Reinforced Polyester), this series of interlocked-switch sockets from 16A to 125A can offer the highest impact resistance (IK10) as well as excellent resistance to heat and fire (GW 960), proving to be practically insensitive to both high and low temperatures (tested at -40° and at $+60^{\circ}$), to corrosion and to atmospheric and chemical agents. The availability of solutions with or without protection devices and a series of modular bases make ADVANCE GRP the widest and most developed series of interlocked-switch sockets made of thermosetting material on the market.



ADVANCE-GRP Series
from page 38

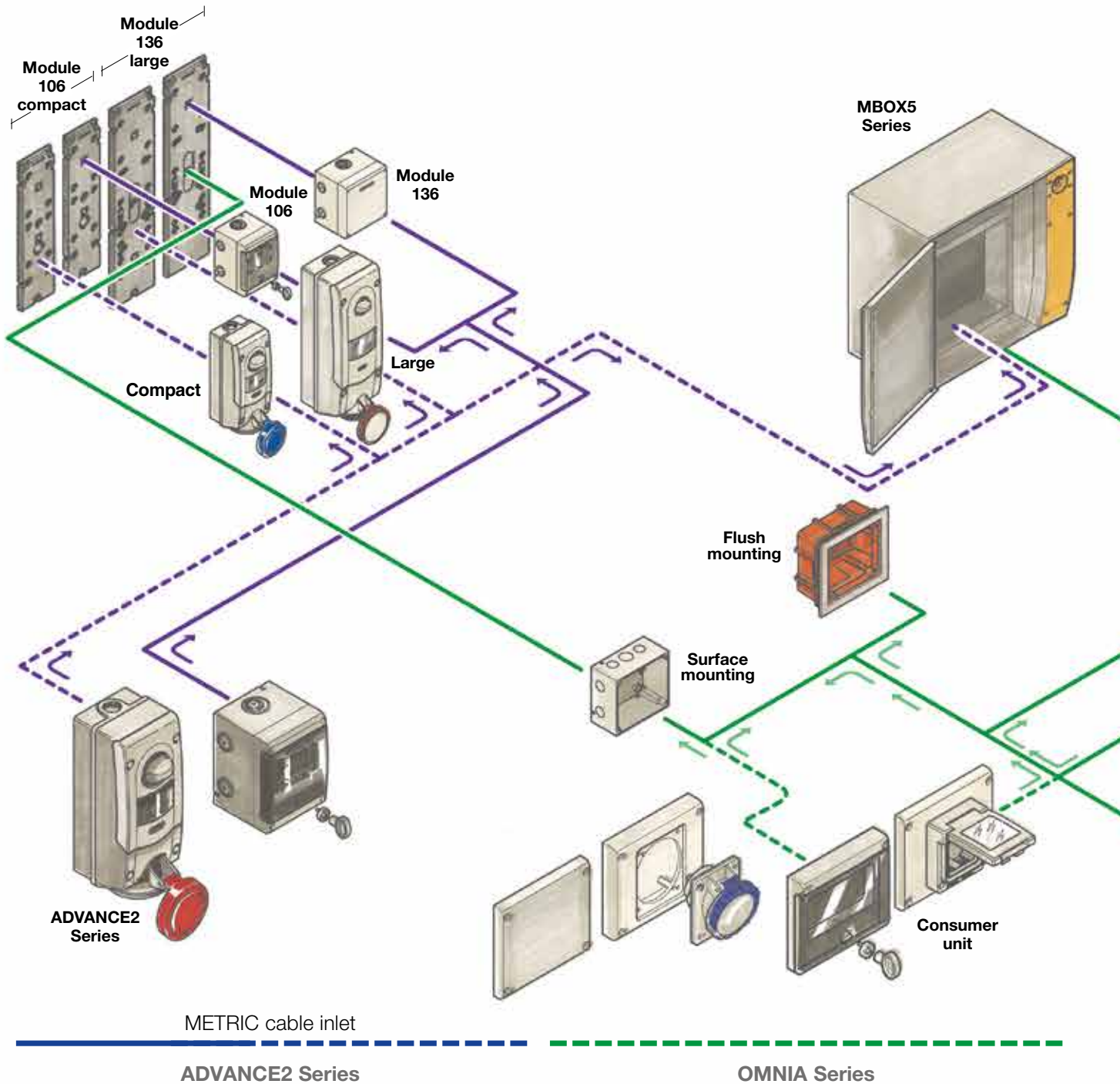
Switched interlocked socket outlets

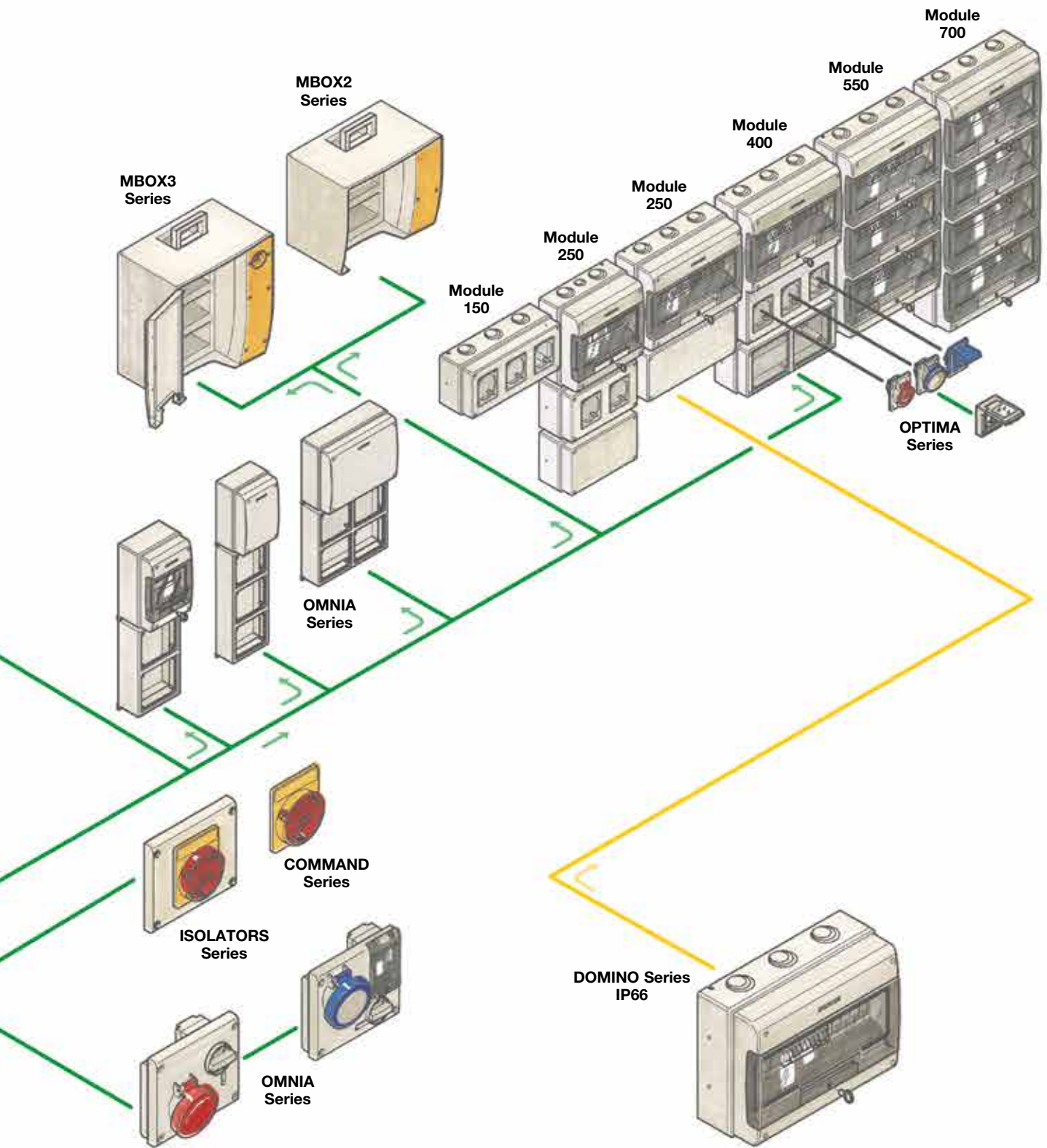
OVERVIEW OF SCAME MODULAR COMPONENTS

INTEGRATED SYSTEMS FOR ELECTRICAL INSTALLATIONS

Scame produces three integrated systems for assembling weatherproof electrical distribution and connection installations:

- DOMINO System a modular system of enclosures for distribution assemblies and consumer units
- ADVANCE2 System a modular system for combination units
- OMNIA System a modular flush and surface mounting system.





OMNIA Series

DOMINO Series

Switched interlocked socket outlets OMNIA >50V

IP44

FLUSH MOUNTING

OMNIA Series



FLANGE 136x125

Poles	Volt	Hz.	h.	16A	
2P+E	100-130	50/60	4	400.1670	6
2P+E	200-250	50/60	6	400.1683	6
3P+E	380-415	50/60	6	400.1686	6
3P+N+E	346-415	50/60	6	400.1687	6

FLANGE 136x125

Poles	Volt	Hz.	h.	32A	
2P+E	100-130	50/60	4	400.3270	6
2P+E	200-250	50/60	6	400.3283	6
3P+E	380-415	50/60	6	400.3286	6
3P+N+E	346-415	50/60	6	400.3287	6

SURFACE MOUNTING

OMNIA Series



Poles	Volt	Hz.	h.	16A	
2P+E	100-130	50/60	4	500.1670	6
2P+E	200-250	50/60	6	500.1683	6
3P+E	380-415	50/60	6	500.1686	6
3P+N+E	346-415	50/60	6	500.1687	6

Poles	Volt	Hz.	h.	32A	
2P+E	100-130	50/60	4	500.3270	6
2P+E	200-250	50/60	6	500.3283	6
3P+E	380-415	50/60	6	500.3286	6
3P+N+E	346-415	50/60	6	500.3287	6

OMNIAPLUS SERIES - DOMESTIC STANDARD INTERLOCKED SOCKET OUTLETS

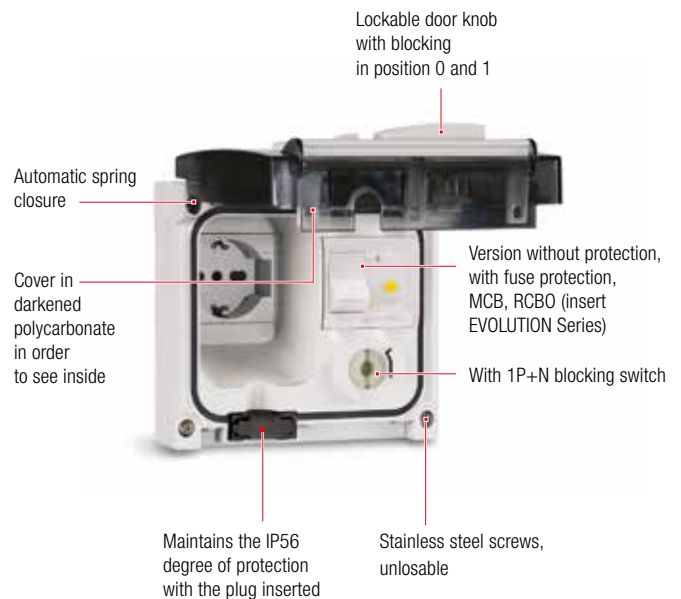
FLUSH MOUNTING

OMNIAPLUS Series



Standard		WITHOUT PROTEC.	FUSE 6.3x32	MCB	RCBO	
Pluristandard	16A - 2P+E	409.0405	409.1405	409.2405	409.3405	1/6
French	16A - 2P+E	409.0411	409.1411	409.2411	409.3411	1/6
German Unshuttered	16A - 2P+E	409.0412	409.1412	409.2412	409.3412	1/6
German Shuttered	16A - 2P+E	409.0407	409.1407	409.2407	409.3407	1/6
British	13A - 2P+E	409.0413	409.1413	409.2413	409.3413	1/6
New Zealand	10A - 2P+E	409.0427	409.1427	409.2427	409.3427	1/6
Swiss	10A - 2P+E	409.0417	409.1417	409.2417	409.3417	1/6
South African	16A - 2P+E	409.0428	409.1428	409.2428	409.3428	1/6
Indian	6/16A 2P+E	409.0429	409.1429	409.2429	409.3429	1/6
Argentine	10A - 2P+E	409.0424	409.1424	409.2424	409.3424	1/6
Brazilian	10A - 2P+E	409.0421	409.1421	409.2421	409.3421	1/6

[exclusive by SCAME]



FLUSH MOUNTING

OMNIA Series



FLANGE 136x125

Poles	Volt	Hz.	h.	16A	
2P+E	100-130	50/60	4	405.1670	6
2P+E	200-250	50/60	6	405.1683	6
3P+E	380-415	50/60	6	405.1686	6
3P+N+E	346-415	50/60	6	405.1687	6

FLANGE 136x125

Poles	Volt	Hz.	h.	32A	
2P+E	100-130	50/60	4	405.3270	6
2P+E	200-250	50/60	6	405.3283	6
3P+E	380-415	50/60	6	405.3286	6
3P+E	380 440	50 60	3	405.32864	6
3P+N+E	346-415	50/60	6	405.3287	6



FLANGE 136x275

Poles	Volt	Hz.	h.	63A	
2P+E	200-250	50/60	6	405.6383	6
3P+E	380-415	50/60	6	405.6386	6
3P+N+E	346-415	50/60	6	405.6387	6

SURFACE MOUNTING

OMNIA Series



Poles	Volt	Hz.	h.	16A	
2P+E	100-130	50/60	4	505.1670	6
2P+E	200-250	50/60	6	505.1683	6
3P+E	380-415	50/60	6	505.1686	6
3P+N+E	346-415	50/60	6	505.1687	6

Poles	Volt	Hz.	h.	32A	
2P+E	100-130	50/60	4	505.3270	6
2P+E	200-250	50/60	6	505.3283	6
3P+E	380-415	50/60	6	505.3286	6
3P+E	380 440	50 60	3	505.32864	6
3P+N+E	346-415	50/60	6	505.3287	6



Poles	Volt	Hz.	h.	63A	
2P+E	200-250	50/60	6	505.6383	6
3P+E	380-415	50/60	6	505.6386	6
3P+N+E	346-415	50/60	6	505.6387	6

COMPOSITION EXAMPLE



Example of a flush mounting combination: consumer unit, junction box and OMNIA Series interlocked-switch socket outlet. IP44 splashproof.



Example of a surface mounting combination: consumer unit and OMNIA Series interlocked-switch socket outlet. IP44 splashproof.



Surface mounting system. Consumer unit 6 DIN system version with OMNIA Series interlocked-switch socket outlet with fuse carrier.



Surface mounting system. Blank plate system with OMNIA Series interlocked-switch outlet without fuse carrier.

Switched interlocked socket outlets OMNIA <50V

IP44

FLUSH MOUNTING

OMNIA Series



FLANGE 136x125

Poles	Volt	Hz.		16A	
2P	20-25	50-60		400.2420	6
2P	20-25	50-60	with transformer	400.2416	6

SURFACE MOUNTING

OMNIA Series



Poles	Volt	Hz.		16A	
2P	20-25	50-60		500.2420	6

IP66/IP67

FLUSH MOUNTING

OMNIA Series



FLANGE 136x125

Poles	Volt	Hz.		16A	
2P	20-25	50-60		405.2420	6
2P	20-25	50-60	with transformer	405.2416	6

SURFACE MOUNTING

OMNIA Series



Poles	Volt	Hz.		16A	
2P	20-25	50-60		505.2420	6

SURFACE MOUNTING BOXES - IP67

OMNIA Series



Description	Dimensions (mm)		
Box for Omnia 16/32A	136x125x70	572.0310	6
Box for 2 Omnia 16/32A	136x275x70	572.0322	6
Box for Omnia 63A	136x275x89	572.0308	6

FLUSH MOUNTING BOX - IP55

OMNIA Series



Description	Dimensions (mm)		
Box to be used in conjunction with the frame	160x148x72	572.0200	6



Description	Dimensions (mm)		
Box for plasterboard walls to be used in conjunction with the frame	160x149x75	572.0205	6



Description	Dimensions (mm)		
Frame for flush mounting boxes complete with gasket	174x163x19	572.0220	6

ACCESSORIES

OMNIA Series

Description	Dimensions (mm)		
Blank plate	136x125x15	654.0120	6
Cut-out plate	136x125x15 16A (70x87mm)	654.0125	6
	136x125x15 32A (84x106mm)	654.0126	6
Consumer unit IP55 6 DIN 10W	136x125x25	572.0120	6

SURFACE MOUNTING ENCLOSURES - IP66

OMNIA Series



Description	DIN Modules	Dimensions (mm)	Dissipation Power		
Consumer unit 2 sockets	6	136x472x146	12W	572.0311	1



Description	DIN Modules	Dimensions (mm)	Dissipation Power		
Consumer unit 3 sockets	6	136x616x146	12W	572.0313	1



Description	DIN Modules	Dimensions (mm)	Dissipation Power		
Consumer unit 4 sockets	14	287x408x146	12W	572.0315	1



Description	DIN Modules	Dimensions (mm)	Dissipation Power		
Junction box 2 sockets	-	136x472x146	-	572.0312	1



Description	DIN Modules	Dimensions (mm)	Dissipation Power		
Junction box 3 sockets	-	136x616x146	-	572.0314	1



Description	DIN Modules	Dimensions (mm)	Dissipation Power		
Junction box 4 sockets	-	287x408x146	-	572.0316	1

Switched interlocked socket outlets ADVANCE2 >50V

IP44

SURFACE MOUNTING

ADVANCE2 Series



COMPACT

Poles	Volt	Hz.	h.	Dimensions (mm)	16A	
2P+E	100-130	50/60	4	106x240 M25	560.1670	1/12
2P+E	200-250	50/60	6	106x240 M25	560.1683	1/12
3P+E	380-415	50/60	6	106x240 M25	560.1686	1/12
3P+N+E	346-415	50/60	6	106x240 M25	560.1687	1/12

Poles	Volt	Hz.	h.	Dimensions (mm)	32A	
2P+E	100-130	50/60	4	106x240 M25	560.3270	1/12
2P+E	200-250	50/60	6	106x240 M25	560.3283	1/12
3P+E	380-415	50/60	6	106x240 M25	560.3286	1/12
3P+N+E	346-415	50/60	6	106x240 M25	560.3287	1/12

SURFACE MOUNTING WITH DIN RAIL 6 MODULES

ADVANCE2 Series



LARGE

Poles	Volt	Hz.	h.	Dimensions (mm)	16A	
2P+E	100-130	50/60	4	106x240 M25	567.1670	1/4
2P+E	200-250	50/60	6	136x390 M25	567.1683	1/4
3P+E	380-415	50/60	6	136x390 M25	567.1686	1/4
3P+N+E	346-415	50/60	6	136x390 M25	567.1687	1/4

Poles	Volt	Hz.	h.	Dimensions (mm)	32A	
2P+E	100-130	50/60	4	106x240 M25	567.3270	1/4
2P+E	200-250	50/60	6	136x390 M25	567.3283	1/4
3P+E	380-415	50/60	6	136x390 M25	567.3286	1/4
3P+N+E	346-415	50/60	6	136x390 M25	567.3287	1/4

APPLICATION EXAMPLE



■ SURFACE MOUNTING

ADVANCE2 Series



COMPACT

Poles	Volt	Hz.	h.	Dimensions (mm)	16A	
2P+E	100-130	50/60	4	106x240 M25	561.1670	1/12
2P+E	200-250	50/60	6	106x240 M25	561.1683	1/12
3P+E	380-415	50/60	6	106x240 M25	561.1686	1/12
3P+N+E	346-415	50/60	6	106x240 M25	561.1687	1/12

Poles	Volt	Hz.	h.	Dimensions (mm)	32A	
2P+E	100-130	50/60	4	106x240 M25	561.3270	1/12
2P+E	200-250	50/60	6	106x240 M25	561.3283	1/12
3P+E	380-415	50/60	6	106x240 M25	561.3286	1/12
3P+E	380 440	50 60	3	106x240 M25	561.32864	1/12
3P+N+E	346-415	50/60	6	106x240 M25	561.3287	1/12



LARGE

Poles	Volt	Hz.	h.	Dimensions (mm)	63A	
2P+E	200-250	50/60	6	136x390 M40	561.6383	1/4
3P+E	380-415	50/60	6	136x390 M40	561.6386	1/4
3P+N+E	346-415	50/60	6	136x390 M40	561.6387	1/4

■ SURFACE MOUNTING WITH DIN RAIL 6 MODULES

ADVANCE2 Series



LARGE

Poles	Volt	Hz.	h.	Dimensions (mm)	16A	
2P+E	100-130	50/60	4	106x240 M25	568.1670	1/4
2P+E	200-250	50/60	6	136x390 M25	568.1683	1/4
3P+E	380-415	50/60	6	136x390 M25	568.1686	1/4
3P+N+E	346-415	50/60	6	136x390 M25	568.1687	1/4

Poles	Volt	Hz.	h.	Dimensions (mm)	32A	
2P+E	100-130	50/60	4	106x240 M25	568.3270	1/12
2P+E	200-250	50/60	6	136x390 M25	568.3283	1/12
3P+E	380-415	50/60	6	136x390 M25	568.3286	1/12
3P+E	380 440	50 60	3	136x390 M25	568.32864	1/12
3P+N+E	346-415	50/60	6	136x390 M25	568.3287	1/12

Poles	Volt	Hz.	h.	Dimensions (mm)	63A	
2P+E	200-250	50/60	6	136x390 M40	568.6383	1/4
3P+E	380-415	50/60	6	136x390 M40	568.6386	1/4
3P+N+E	346-415	50/60	6	136x390 M40	568.6387	1/4

SWITCHED INTERLOCKED SOCKET OUTLETS

■ SURFACE MOUNTING

ADVANCE2 Series



COMPACT

Poles	Volt	Dimensions (mm)		16A	
2P	20-25	106x240	with transformer	565.2416	1/10



LARGE

Poles	Volt	Dimensions (mm)		16A	
2P	20-25	136x390	with transformer	565.2516	1/10

IP66/IP67

■ SURFACE MOUNTING

ADVANCE2 Series



COMPACT

Poles	Volt	Dimensions (mm)		16A	
2P	20-25	106x240	with transformer	565.2416/S	1/10



LARGE

Poles	Volt	Dimensions (mm)		16A	
2P	20-25	136x390	with transformer	565.2516/S	1/10

APPLICATION EXAMPLE



MODULAR SYSTEM

ADVANCE2 Series



Description	Module			
Modular bases Complete with inserts for joining several bases	compact	576.4300	12	
	large	576.4340	12	



Description	Power dissipation		Module		
Enclosures One-module with window	4 DIN	8W	compact	576.4302	6
	6 DIN	9W	large	576.4322	6



Description	Module			
Enclosures One-module plain lid	compact	576.4301	12	
	large	576.4321	12	



Description	Power dissipation		Module		
Enclosures Two-modules with window	10 DIN	14W	compact	576.4305	6
	13 DIN	17W	large	576.4325	6



Description	Module			
Enclosures Two-modules plain lid	compact	576.4304	6	
	large	576.4324	6	



Description	Flange	Module		
Enclosures One-module with cut out	70x87	compact	576.4303	12
	70x87	large	576.4323	12

SWITCHED INTERLOCKED SOCKET OUTLETS

COMBINATION UNIT EXAMPLE



WITHOUT BASE

ADVANCE-GRP Series



Poles	Volt	Hz.	h.	16A	
2P+E	100-130	50/60	4	402.1670	1
2P+E	200-250	50/60	6	402.1683	1
3P+E	380-415	50/60	6	402.1686	1
3P+N+E	346-415	50/60	6	402.1687	1

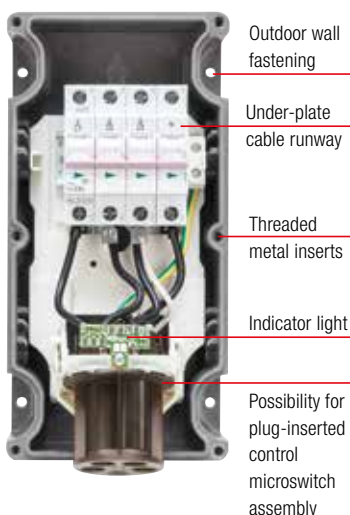
Poles	Volt	Hz.	h.	32A	
2P+E	100-130	50/60	4	402.3270	1
2P+E	200-250	50/60	6	402.3283	1
3P+E	380-415	50/60	6	402.3286	1
3P+E	380 440	50 60	3	402.32864	1
3P+N+E	346-415	50/60	6	402.3287	1



Poles	Volt	Hz.	h.	63A	
2P+E	200-250	50/60	6	402.6383	1
3P+E	380-415	50/60	6	402.6386	1
3P+N+E	346-415	50/60	6	402.6387	1

TECHNICAL CHARACTERISTICS 16A-32A-63A VERSIONS

WITH MCB



BOTTOM VIEW

Module in high-temperature resistant engineering polymer

Possible entry from bottom side (input-output also)

TOP VIEW

Self-centering punch marks to facilitate drilling

OUTSTANDING HEAT AND FIRE RESISTANCE

The glass-fibre reinforced polyester used in **ADVANCE-GRP** guarantees excellent heat and fire resistance: it does not propagate flames, emit halogens or smoke.

This material has outstanding flame retardancy: Glow Wire 960°C according to EN 60695-2-1; V0 according to UL94. It's suited for applications requiring the use of components with low smoke emission and no halogens, LSOH (Low Smoke Zero Halogen).



OUTSTANDING IMPACT RESISTANCE

The glass-fibre reinforced polyester used in **ADVANCE-GRP** and the high thickness of the casing walls guarantee an excellent mechanical resistance to impacts.

The **SMC** technology used to produce the casings makes **ADVANCE-GRP** an indestructible product. The impact resistance of the casings is higher than 20J (IK10) according to EN50102, even under limit temperature conditions (-40°C +60°C).



RESISTANCE TO CHEMICAL AGENTS

The **ADVANCE-GRP** interlocked sockets and casings, thanks to the glass-fibre reinforced polyester with which they are produced, have excellent resistance to aggressive chemical substances, saline solutions, diluted acids, hydrocarbons, mineral oils, alcoholic substances. They are ideal for use in highly corrosive atmospheres.



RESISTANCE TO ATMOSPHERIC AGENTS

The structure and materials used also make **ADVANCE-GRP** a product suited for the most extreme environmental conditions.

The triple degree of protection IP66, IP67 and IP69 (IP66 for 125A), guarantees an excellent seal against the entry of solid objects or liquids into the casings. Outstanding resistance to UV radiation, exceptional reliability under environmental stress and use at both low and high ambient temperatures (-40°C +60°C).



**EXTRA LOW VOLTAGE
SOCKET OUTLET**

ADVANCE-GRP Series



Poles	Volt		16A	
2P	20-25	with transformer	403.2416	1/10



Poles	Volt		16A	
2P	20-25		403.2420	1/10



Poles	Volt		16A	
2P	20-25	with transformer with fuse holder	403.2416-F	1/10

APPLICATION EXAMPLE



APPLICATION EXAMPLE



WITHOUT BASE I-DEVICE

ADVANCE-GRP Series



Poles	Volt	Hz.	h.	16A	
2P+E	200-250	50/60	6	403.1683	1
3P+E	380-415	50/60	6	403.1686	1
3P+N+E	346-415	50/60	6	403.1687	1

Poles	Volt	Hz.	h.	32A	
2P+E	200-250	50/60	6	403.3283	1
3P+E	380-415	50/60	6	403.3286	1
3P+E	380 440	50 60	3	403.32864	1
3P+N+E	346-415	50/60	6	403.3287	1

WITHOUT BASE WITH MCB

ADVANCE-GRP Series



Poles	Volt	Hz.	h.	16A	
2P+E	200-250	50/60	6	403.1683-M	1
3P+E	380-415	50/60	6	403.1686-M	1
3P+N+E	346-415	50/60	6	403.1687-M	1

Poles	Volt	Hz.	h.	32A	
2P+E	200-250	50/60	6	403.3283-M	1
3P+E	380-415	50/60	6	403.3286-M	1
3P+E	380 440	50 60	3	403.32864-M	1
3P+N+E	346-415	50/60	6	403.3287-M	1



Poles	Volt	Hz.	h.	63A	
2P+E	200-250	50/60	6	403.6383	1
3P+E	380-415	50/60	6	403.6386	1
3P+N+E	346-415	50/60	6	403.6387	1



Poles	Volt	Hz.	h.	63A	
2P+E	200-250	50/60	6	403.6383-M	1
3P+E	380-415	50/60	6	403.6386-M	1
3P+N+E	346-415	50/60	6	403.6387-M	1

TECHNICAL CHARACTERISTICS 16A-32A-63A VERSIONS

Single-piece waterproof gasket



Dual mechanical lock

High-strength material with superior UV and chemical resistance



Ergonomic knob which can be padlocked in position 0 and 1, manoeuvrable even with gloves

Fuse inspection door, tamper-proof, lockable, with assisted opening

Cover entirely separate from the base for easy installation

Captive stainless steel closing screws

I-Device

An electronic device controls (Intelligence Device) the status of the interlocked socket, monitoring the electrical functionality:

- operation of the signalling and control card is guaranteed even when the load is not connected;

INDICATOR LIGHT ON

- - indicates that the fuses are not open and all the phases are present;
- indicates that the socket outlet is powered correctly;

INDICATOR LIGHT FLASHING

- ⚡ - signals the interruption of one or more fuses;
- signals the absence of a phase*;

INDICATOR LIGHT OFF

- - indicates that the socket outlet is not powered.



* for single-phase products in the event of phase/neutral loss led signaling appears off.

BASES AND CONSUMER UNIT

ADVANCE-GRP Series



Description	DIN modules	HxB (mm)	Power dissipation (W)	16A-32A	
Base for one socket	-	260x130	-	579.5100	1

Description	DIN modules	HxB (mm)	Power dissipation (W)	63A	
Base for one socket	-	380x170	-	579.5200	1



Description	DIN modules	HxB (mm)	Power dissipation (W)	16A-32A	
Base for one socket with consumer unit	6	460x130	9	579.5111	1

Description	DIN modules	HxB (mm)	Power dissipation (W)	63A	
Base for one socket with consumer unit	8	580x170	13	579.5211	1



Description	DIN modules	HxB (mm)	Power dissipation (W)	16A-32A	
Base for one socket with junction box	-	460x130	9	579.5110	1

Description	DIN modules	HxB (mm)	Power dissipation (W)	63A	
Base for one socket with junction box	-	580x170	13	579.5210	1



Description	DIN modules	HxB (mm)	Power dissipation (W)	16A-32A	
Base for two sockets with junction box	-	460x260	16	579.5120	1

Description	DIN modules	HxB (mm)	Power dissipation (W)	16A-32A	
Base for two sockets with consumer unit	13	460x260	16	579.5121	1

Power dissipation in conformity with CEI 23-48 CEI 23-49. IP66/IP67/IP69 when coupled with the respective component.

APPLICATION EXAMPLE



COMBINATION UNITS EXAMPLES



579.0030



579.0040



579.0021



579.0031



579.0022



M32 bottom joining kit (page 42)

Switched interlocked socket outlets ADVANCE-GRP

AUXILIARY CONTACTS

ADVANCE-GRP Series



Description	For switched			
Contact NC	16A-32A	590.PL004001	1	
Contact NC	63A	590.PL004003	1	
Contact NO	16A-32A	590.PL004002	1	
Contact NO	63A	590.PL004004	1	

GALVANIZED STEEL SUPPORTS

ADVANCE-GRP Series



Description	HxB (mm)			
3 x 16A-32A	555x390	579.0030	1	
4 x 16A-32A	555x520	579.0040	1	
2 x 16A-32A + 1 x 63A	685x430	579.0021	1	
3 x 16A-32A + 1 x 63A	685x560	579.0031	1	
2 x 16A-32A + 2 x 63A	685x610	579.0022	1	

ACCESSORIES

ADVANCE-GRP Series

Description				
Microswitch kit 400V 10A (microswitch + terminal block) 125A for plug-inserted control (*)	1NA+1NC	579.0125	1	
Microswitch Kit for Advance-GRP 16A-32A-63A for plug-inserted control	1NA/1NC	579.0100	1	
Junction box Kit IP66/IP67/IP69 M40 16A-32A-63A (*)		579.0200	1/12	
Junction box Kit IP66/IP67/IP69 M50 (*)		579.0201	1/12	
4 mod. DIN		579.0450	10	
Thumb Screws (°)		579.0400	1/12	
M32 bottom jointing Kit M32		579.0332	1/12	
Base blank cover (Δ)		579.5001	10	

(*) Includes cable gland and gasket.

(°) For bases with control units instead of screws for closing the doors.

(Δ) Cover used to close the socket compartment; allows other devices to be installed.

MECHANICALLY INTERLOCKED SOCKET OUTLET

ADVANCE-GRP Series



Poles	Volt	Hz.	h.	125A	
3P+E	380-415	50/60	6	503.12586	1
3P+N+E	346-415	50/60	6	503.12587	1

Poles	Volt	Hz.	h.	125A	
3P+E	380-415	50/60	6	503.12586-F	1
3P+N+E	346-415	50/60	6	503.12587-F	1

Poles	Volt	Hz.	h.	125A	
3P+E	380-415	50/60	6	503.12586-FS	1
3P+N+E	346-415	50/60	6	503.12587-FS	1

Poles	Volt	Hz.	h.	125A	
3P+E	380-415	50/60	6	503.12586-M	1
3P+N+E	346-415	50/60	6	503.12587-M	1

Poles	Volt	Hz.	h.	125A	
3P+E	380-415	50/60	6	503.12586-RM	1
3P+N+E	346-415	50/60	6	503.12587-RM	1




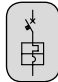
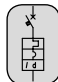

ELECTRICALLY INTERLOCKED SOCKET OUTLET

ADVANCE-GRP Series



Poles	Volt	Hz.	h.	125A	
3P+E	380-415	50/60	6	503.12586-T	1
3P+N+E	346-415	50/60	6	503.12587-T	1

LEGEND

-  Switch-disconnector
-  Switch-disconnector and fuse (*)
-  Fuse (*) and switch-disconnector
-  Molded case circuit breaker with thermal magnetic trip unit
-  Molded case circuit breaker with thermal magnetic and residual current release trip units
-  Contactor (**)

(*) Fuses not included. (**) Microswitch already provided.

APPLICATION EXAMPLE



3

EMPTY ENCLOSURE

- Distribution assemblies
- Aluminium junction boxes
- Junction boxes



In a modern electrical system, diverting and distributing is just as important as connecting, and entails equally responsible design choices.



When talking about consumer units and distribution assemblies, the key words are flexibility and modularity. Two concepts perfectly represented by the **DOMINO** Series, which is able to meet countless installation needs in small business and industrial environments, as well as in the tertiary sector. Its modern design allows it to fit in pleasantly in any work environment. The DOMINO Series offers a complete range of consumer units and wall-mounting enclosures for distribution assemblies, airtight and modular, and featuring high flexibility of use and significant expansion potential.

DOMINO Series • from page 46



Since they are equipped with an extremely compact frame, the **BLOCK** distribution assemblies are suited, compared to larger-sized assemblies, for powering reduced number of small-medium utilities.

Made of sturdy thermoplastic material, the BLOCK distribution assemblies are as versatile as the DOMINO assemblies and have the same field of use; moreover, they can be easily moved thanks to a retractable tilting handle.

BLOCK Series • from page 52



ENERBOX inherits from the BLOCK Series its small size, with the advantage of the option to install additional domestic standard socket outlets on the side panels, in addition to the front ones, in order to expand the connection possibilities.

ENERBOX Series • from page 53



With the **ALUBOX** Series, SCAME offers a range of products made of die-cast aluminium intended to meet specific requirements in situations where particularly robust products are needed.

Because of its high mechanical resistance as well as resistance to climatic and environmental stress, the ALUBOX Series is particularly suited for installation in harsh environments such as industrial installations, including heavy-duty, installation on board the machine, plant automation, as well as thermal, chemical and petrochemical installations.

ALUBOX Series • from page 54



The **SCABOX** Series of junction boxes is characterised by the use of halogen-free, impact-resistant and self-extinguishing thermoplastic materials. There is a wide range of available sized in a large number of configurations: with or without cable sleeves, with a higher base to add wiring space and with transparent cover to allow internal inspection. The base/cover coupling is ensured by stainless steel or plastic captive screws at a quarter turn, whilst the IP rating is guaranteed by the co-moulded seal for constant protection against the entrance of dust and liquids.

SCABOX Series • from page 56



ENCLOSURE BLANK PANEL

DOMINO Series



Module	DIN modules (17,5mm)	Dimensions hxbxp (mm)	Dissipated power (*)		
M340	8	340x184x140	14W	672.2100	1/10



Module	DIN modules (17,5mm)	Dimensions hxbxp (mm)	Dissipated power (*)		
M400	16	400x328x140	28W	672.4116	1/4



Module	DIN modules (17,5mm)	Dimensions hxbxp (mm)	Dissipated power (*)		
M550	16	550x328x140	28W	672.5116	1/3

ENCLOSURE PANEL WITH CUT-OUTS

DOMINO Series



FLANGE 70x87 (*)

Module	DIN modules (17,5mm)	Dimensions hxbxp (mm)	Dissipated power	Sockets		
M150	-	150x328x115	20W	3	672.1300	1/6



FLANGE 70x87

Module	DIN modules (17,5mm)	Dimensions hxbxp (mm)	Dissipated power	Sockets		
M340	8	340x184x140	14W	2	672.2300	1/10



FLANGE 70x87 (*)

Module	DIN modules (17,5mm)	Dimensions hxbxp (mm)	Dissipated power	Sockets		
M400	12	400x256x140	22W	2	672.3300	1/4
	16	400x328x140	28W	3	672.4316	1/4



FLANGE 70x87 (*)

Module	DIN modules (17,5mm)	Dimensions hxbxp (mm)	Dissipated power	Sockets		
M550	16	550x328x140	28W	6	672.5616	1/3



FLANGE 70x87 (*)

Module	DIN modules (17,5mm)	Dimensions hxbxp (mm)	Dissipated power	Sockets		
M550	24	550x477x140	28W	8	672.5822	1/2

(*) Cut-outs for 16A (70x87) or 32A (84x106) sockets.



Flush mounting inlets and sockets from page 21



Sockets for domestic applications page 24

ENCLOSURE
PANEL WITH CUT-OUTS

DOMINO Series



FLANGE 136x125

Module	DIN modules (17,5mm)	Dimensions hxbxp (mm)	Dissipated power	Sockets		
M150	-	150x256x115	18W	2	672.1200	1/6



FLANGE 136x125
FLANGE 136x275

Module	DIN modules (17,5mm)	Dimensions hxbxp (mm)	Dissipated power	Sockets		
M550	16	550x328x140	28W	3	672.5316	1/3



FLANGE 136x125

Module	DIN modules (17,5mm)	Dimensions hxbxp (mm)	Dissipated power	Sockets		
M400	16	400x328x140	28W	2	672.4216	1/4



FLANGE 136x125
FLANGE 136x275

Module	DIN modules (17,5mm)	Dimensions hxbxp (mm)	Dissipated power	Sockets		
M550	24	550x477x140	28W	5	672.5522	1/2



FLANGE 136x125

Module	DIN modules (17,5mm)	Dimensions hxbxp (mm)	Dissipated power	Sockets		
M550	16	550x328x140	28W	6	672.5416	1/3



FLANGE 136x125
FLANGE 70x87

Module	DIN modules (17,5mm)	Dimensions hxbxp (mm)	Dissipated power	Sockets		
M550	24	550x477x140	28W	6	672.5622	1/2



Flush mounting inlets and sockets from page 21



Sockets for domestic applications from page 24



Switched interlocked socket outlets from page 30

CONSUMER UNITS

DOMINO Series



Module	DIN modules (17,5mm)	Dimensions hxbxp (mm)	Dissipated power		
M135	2	135x76x102	6W	672.2002	1/24



Module	DIN modules (17,5mm)	Dimensions hxbxp (mm)	Dissipated power		
M400	24 (12X2)	400x256x140	30W	672.4024	1/6



Module	DIN modules (17,5mm)	Dimensions hxbxp (mm)	Dissipated power		
M190	4	190x112x106	10W	672.2004	1/16



Module	DIN modules (17,5mm)	Dimensions hxbxp (mm)	Dissipated power		
M400	32 (16X2)	400x328x140	47W	672.4032	1/4



Module	DIN modules (17,5mm)	Dimensions hxbxp (mm)	Dissipated power		
M190	8	190x184x106	14W	672.2008	1/10



Module	DIN modules (17,5mm)	Dimensions hxbxp (mm)	Dissipated power		
M550	48 (16X3)	550x328x140	54W	672.5048	1/3



Module	DIN modules (17,5mm)	Dimensions hxbxp (mm)	Dissipated power		
M250	12	250x256x140	22W	672.2012	1/9



Module	DIN modules (17,5mm)	Dimensions hxbxp (mm)	Dissipated power		
M700	64 (16X4)	700x328x140	60W	672.7064	1



Module	DIN modules (17,5mm)	Dimensions hxbxp (mm)	Dissipated power		
M250	16	250x328x140	28W	672.2016	1/6

ELEMENTS

DOMINO Series



Description	Dimensions (mm)		
Base	150x328x115	674.1000	6



Description	Dimensions (mm)		
Coperchio 2 prese Omnia	150x328x115	674.1200	6
Coperchio 3 prese 70x87	150x328x115	674.1300	6

KIT ACCESSORIES

DOMINO Series

Description			
Wall mounting brackets (4 pieces)	654.0020	10	
Connection kit PG21 Multiples of 12 DIN	654.0038	3	
Connection kit PG36 Multiples of 12 DIN	654.0040	3	
Handle KIT	654.0060	10	
Plate for panel cut-outs 70x87	654.0100	25	
Plate for din modules CAVITY 4 DIN 70x55	654.0400	25	
Yale lock KIT	654.0070	10	

TERMINAL BLOCKS FOR DIN RAIL - IP20

DOMINO Series



Description			
Vertical	654.0358	10/100	
Horizontal	654.0359	10/100	

MODULAR TERMINAL BLOCKS - IP20

DOMINO Series



Description			
Additional terminal block (ATB)	654.0360	10	
Terminal block 12-24 DIN (space for 1 ATB)	654.0361	10	
Terminal block 16-32-48-64 DIN (space for 2 ATB)	654.0362	10	
Terminal block 8 DIN	654.0363	10	
Terminal block 4 DIN	654.0365	10	

DIN RAIL MOUNTING DOMESTIC SOCKETS


Description	No. modules (mm)		
Italian P40 16A 2P+E	2 mod.	101.6405.GD	6
French 16A 2P+E	2 mod.	101.6411.GD	6
German 16A 2P+E	2 mod.	101.6407.GD	6
British 16A 2P+E	2 mod.	101.6413.GD	6
Argentine 10A 2P+E	2 mod.	101.6424.GD	6
South African 16A 2P+E	2 mod.	101.6428.GD	6
Swiss 10A 2P+E	1 mod.	101.6417.GD	6



Modularity	DIN modules (17,5mm)	Dimensions axbxc (mm)	Dissipated power		
	Total for row				
8 DIN	8+1 (8+1)	190x254x108	17W	673.2008	1/12



Modularity	DIN modules (17,5mm)	Dimensions axbxc (mm)	Dissipated power		
	Total for row				
18 DIN	18+1 (18+1)	250x434x140	42W (74WΔ)	673.2018	1/6



Modularity	DIN modules (17,5mm)	Dimensions axbxc (mm)	Dissipated power		
	Total for row				
12 DIN	12+1 (12+1)	250x326x108	24W (48WΔ)	673.2012	1/7



Modularity	DIN modules (17,5mm)	Dimensions axbxc (mm)	Dissipated power		
	Total for row				
18 DIN	36+4 (18+2)-(18+2)	400x434x140	57W (96WΔ)	673.4036	1/4



Modularity	DIN modules (17,5mm)	Dimensions axbxc (mm)	Dissipated power		
	Total for row				
12 DIN	24+4 (12+2)-(12+2)	400x326x108	35W (63WΔ)	673.4024	1/5



Modularity	DIN modules (17,5mm)	Dimensions axbxc (mm)	Dissipated power		
	Total for row				
18 DIN	54+5 (18+2)-(18+2)-(18+2)	550x434x140	75W (125WΔ)	673.5054	1/2

(Δ) 2 consumer units on top of each other joined by specially designed accessories.

FLUSH MOUNTING CONSUMER UNITS

DOMINO Series



Modularity	DIN modules (17.5 mm) totals/for row	Dimensions axbxc (mm)	Dissipated power		
4 DIN	4+½ (4+1/2)	180x150x75 (••)	17W	675.2104	1/38



Modularity	DIN modules (17.5 mm) totals/for row	Dimensions axbxc (mm)	Dissipated power		
18 DIN	18+1 (18+1)	270x434x75	36W	675.2018	1/7



Modularity	DIN modules (17.5 mm) totals/for row	Dimensions axbxc (mm)	Dissipated power		
8 DIN	8+½ (8+1)	210x254x75	21W	675.2008	1/10



Modularity	DIN modules (17.5 mm) totals/for row	Dimensions axbxc (mm)	Dissipated power		
18 DIN	36+4 (18+2)-(18+2)	420x434x95	61W	675.4036	1/3



Modularity	DIN modules (17.5 mm) totals/for row	Dimensions axbxc (mm)	Dissipated power		
12 DIN	12+1 (12+1)	270x326x75	32W	675.2012	1/7



Modularity	DIN modules (17.5 mm) totals/for row	Dimensions axbxc (mm)	Dissipated power		
18 DIN	54+3 (18+1)-(18+1)-(18+1)	570x434x95	71W	675.5054	1/2



Modularity	DIN modules (17.5 mm) totals/for row	Dimensions axbxc (mm)	Dissipated power		
12 DIN	24+4 (12+2)-(12+2)	420x326x95	52W (74WΔ)	675.4024	1/5

(Δ) 2 consumer units on top of each other joined by specially designed accessories.
 (••) Without window.

ENCLOSURE - BLANK PANEL

BLOCK Series



Description	DIN modules	Dimensions (mm)	Dissipated power		
BLOCK1	4	110x280x95	8W	632.1510-000	1



Description	DIN modules	Dimensions (mm)	Dissipated power		
BLOCK3	6	136x440x105	9 W	632.3510-000	1



Description	DIN modules	Dimensions (mm)	Dissipated power		
BLOCK4	11	212x415x105	14W	632.4510-000	1



Description	DIN modules	Dimensions (mm)	Dissipated power		
BLOCK5	10	272x414x110	15W	632.5510-000	1

ENCLOSURE - WITH CUT-OUTS

BLOCK Series



(*)



FLANGE 70x87

Description	Moduli	Dimensions (mm)	Dissipated power	Sockets		
BLOCK1	4	110x280x95	8W	1	632.1500-000	1



(*)



FLANGE 70x87

Description	DIN modules	Dimensions (mm)	Dissipated power	Sockets		
BLOCK3	6	136x440x105	8W	3	632.3500-000	1



(*)



FLANGE 70x87

Description	DIN modules	Dimensions (mm)	Dissipated power	Sockets		
BLOCK4	11	212x415x105	14W	4	632.4500-000	1



(*)



FLANGE 70x87

Description	DIN modules	Dimensions (mm)	Dissipated power	Sockets		
BLOCK5	14	272x414x110	15W	5	632.5500-000	1

(*) Cut-outs for 16A (70x87) and 32A (84x106) sockets in the highlighted positions.

ACCESSORIES

BLOCK Series

Description		
Plate for panel cut-outs 70x87	654.0100	25
Terminal blocks without insulated base - IP00	654.0349	10/100



Flush mounting inlets and sockets from page 21



Sockets for domestic applications page 24

ENCLOSURE - BLANK PANEL

ENERBOX Series



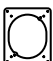
DIN modules	Dimensions (mm)	Dissipated power	Front knockouts	Side knockouts		
6 DIN	285x145x107	9W	Blank plate	4 closed	633.1010	1
	285x145x107	9W	1x16/32A	2 open - 2 closed	633.1011	1
	285x145x107	9W	1x63A	2 open - 2 closed	633.1012	1

ENCLOSURE - PANEL WITH CUT-OUTS

ENERBOX Series



DIN modules	Dimensions (mm)	Dissipated power	Front cut-outs	Side cut-outs		
11 DIN	285x235x107	15W	Blank plate	4 closed	633.2020	1
	285x235x107	15W	2x16/32A	2 open - 2 closed	633.2021	1
	285x235x107	15W	2x63A	2 open - 2 closed	633.2022	1
	285x235x107	15W	1x16/32A+1x63A	2 open - 2 closed	633.2023	1

Front cut-outs  16A (70x87 mm)
32A (84x106 mm)
63A (100x110 mm)

Side cut-outs  (50x60 mm)




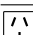

FLUSH MOUNTING DOMESTIC STANDARD SOCKET OUTLETS

DOMO Series

IP54










FLANGE 50x60

Standard	Description		
 French	16A 2P+E	570.2091	10/100
 German unshutter	16A 2P+E	570.2061	10/100
 British	13A 2P+E	570.2041	10/100
 Argentine	10A 2P+E	570.2093	10/100
 Brazilian	20A 2P+E	570.2092	10/100

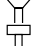

APPLICATION EXAMPLE





	Dimensions (mm)		Screw for attaching cover	Earthing screws	Weight (Kg)		
Enclosure and cover in die-cast aluminium	100x100x59		n° 2 M5x10mm	n°1 M4x6	0,255	653.00	1/32
	140x115x60		n° 4 M5x16mm	n°1 M4x6	0,400	653.01	1/24
	166x142x64		n° 4 M5x16mm	n°1 M4x6	0,585	653.02	1/16
	192x168x80		n° 4 M5x16mm	n°1 M4x6	0,870	653.03	1/12
	253x217x93		n° 4 M6x20mm	n°1 M4x6	1,760	653.04	1/6
	314x264x122		n° 4 M6x20mm	n°1 M4x6	2,880	653.05	1/2
	410x315x153		n° 4 M6x20mm	n°1 M4x6	6,500	653.07	1

- Externally varnished.
- With stainless steel screws for attaching cover and self-tapping zinc-coated steel screws for earthing the enclosure and cover.

 = counter-sunk head screw.
 = flat head screw.

APPLICATION EXAMPLE



MOUNTING PLATES

ALUBOX Series



For enclosures (mm)	Screw for attaching cover	Thickness (mm)		
100x100x59				
140x115x60	n° 4 M4x6	1,5	653.011	1/40
166x142x64	n° 4 M4x6	1,5	653.012	1/20
192x168x80	n° 4 M4x6	1,5	653.013	1/20
253x217x93	n° 4 M4x6	1,5	653.014	1/10
314x264x122	n° 4 M4x6	1,5	653.015	1/10
410x315x153	n° 4 M4x6	2	653.017	5

- Zinc-coated steel plate.

- With zinc-coated steel self-tapping screws for attaching the plate.

DIN RAIL KIT

ALUBOX Series



For enclosures (mm)		
100x100x59	653.020	1
140x115x60	653.021	1
166x142x64	653.022	1
192x168x80	653.023	1
253x217x93	653.024	1
314x264x122	653.025	1
410x315x153	653.027	1

ALUBOX SERIES TECHNICAL CHARACTERISTICS

Enclosures and covers in aluminium alloy with blank walls and covered.



Holding seal in expanded EPDM, already mounted in place on the cover.



Fixing to wall by brackets incorporated in the enclosure base.



BOX WITH BLANK SIDES

SCABOX Series

CUBIK Series



GW 650°C

GW 650°C - CLEAR COVER

GW 650°C - IP55

GW 960°C - IP55

Cover	Dimensions (mm)	Fixing screws	Metal screws		Metal screws		1/4 turn engineering plastic screws		1/4 turn engineering plastic screws	
Screw cover	100x100x50	4	686.204	1/40	686.224	1/40	689.204	48	688.204.R	48
	100x100x80	4	686.404	1/24	686.424	1/24				
	120x80x50	2	686.205	1/42	686.225	1/42	689.205	42	688.205.R	42
	150x110x70	4	686.206 (*)	1/48	686.226 (*)	1/48	689.206	48	688.206.R	48
	190x140x70	4	686.207 (*)	1/30	686.227 (*)	1/30				
	240x190x90	4	686.208 (◆)(*)	1/16	686.228 (◆)(*)	1/16				
	240x190x125	4	686.408 (◆)(*)	1/6	686.428 (◆)(*)	1/6				
	300x220x120	4	686.209 (◆)(*)	1/8	686.229 (◆)(*)	1/8				
	300x220x170	4	686.409 (◆)(*)	1/6	686.429 (◆)(*)	1/6				
	380x300x120	4	686.210 (◆)(*)	1/4	686.230 (◆)(*)	1/4				
	380x300x170	6	686.410 (◆)(*)	1/3	686.430 (◆)(*)	1/3				
	450x370x130	6	686.211 (◆)(■)	1	686.231 (◆)(■)	1				
	450x370x180	6	686.411 (◆)(■)	1	686.431 (◆)(■)	1				

(*) (K1) It is possible to use the wall mounting brackets kit item 654.0021.

(■) (K2) It is possible to use the wall mounting brackets kit item 654.0023.

(◆) Suitable for the hinges mounting.

BACK PLATE

SCABOX Series



Cover	Dimensions (mm)		
Zinc-coated steel back plate	190x140	654.0787	1
	240x190	654.0788	1
	300x220	654.0789	1
	380x300	654.0790	1
	452x372	654.0791	1

ACCESSORIES

SCABOX Series

Cover	Dimensions (mm)		
Hinge kit	452x372	654.0085	1/20
Wall mounting brackets	K1 (4 pz.)	654.0021	1/10
	K2 (4 pz.)	654.0023	1/10
Cover sealing kit		654.0032	1/25
Fixing plug		654.0022	2000
Sealing caps		654.0080	100

BOX WITH CABLE SLEEVES

SCABOX Series

CUBIK Series



GW 650°C



GW 650°C



GW 650°C



GW 960°C

Cover	Dimensions (mm)	No. of inlets	For	Fixing screws	SCABOX Series				CUBIK Series	
					Item	Metal screws	Item	1/4 turn engineering plastic screws	Item	1/4 turn engineering plastic screws
Release cover	ø65x35	4xø23mm	PG 16	2	680.001	4/100				
	ø80x40	4xø23mm	PG 16	2	680.002	4/100				
	80x80x40	6xø23mm	PG 16	2	680.003	4/60				
Screw cover	100x100x50	6xø29mm	PG 21	4	685.004	1/48	689.004 (▲)	48	688.004.R (▲)	48
	120x80x50	6xø29mm	PG 16	2	685.005	1/54	689.005	54	688.005.R	54
	150x110x70	10xø29mm	PG 21	4	685.006 (*)	1/40	689.006	40	688.006.R	40
	190x140x70	10xø38mm	PG 29	4	685.007 (*)	1/24				
	240x190x90	12xø38mm	PG 29	4	685.008 (◆)(*)	1/12				
	300x220x120	12xø38mm	PG 29	4	685.009 (◆)(*)	1/6				
	380x300x120	12xø48mm	PG 36	4	685.010 (◆)(*)	1/4				
	450x370x130	14xø48mm	PG 36	6	685.011 (◆)(■)	1				

(▲) No of inlets 7xø29mm.

(◆) Suitable for the hinges mounting.

(*) (K1) It is possible to use the wall mounting brackets kit item 654.0021.

(■) (K2) It is possible to use the wall mounting brackets kit item 654.0023.

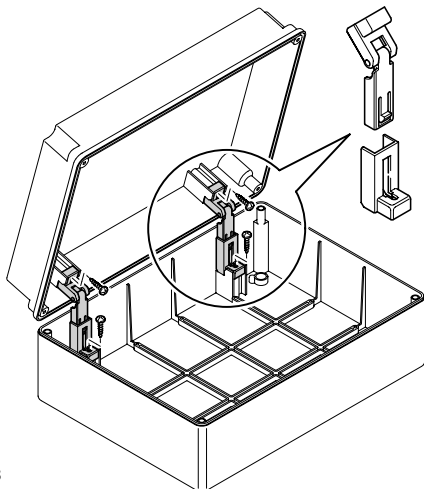
HINGES KIT

An interesting accessory for SCABOX Series, a practical hinge kit is available that permits the book-like opening of the cover while keeping it integral with the base.

The kit can be optionally applied inside the casing in a quick and simple manner; thus the SCABOX acquires greater functionality – perfect in the installation phase, during the wiring operations, and extremely practical for the subsequent phases of maintenance and inspection, since it keeps the cover supported and hinged to the base.

Pressing lightly on the small lever of the hinge, it is possible to remove the cover from the base and to thus separate the two elements.

With a simple locking manoeuvre it is possible to eventually replace the cover to the base.



SCABOX Series
Hinges kit (3 pieces).
Item 654.0085.

CUBIK SERIES

CUBIK is a range of junction boxes made of impact resistant and self extinguishing thermoplastic material specifically formulated to stand high temperatures (GW 960°C).

Thanks to this unique feature CUBIK junction boxes are suitable for installation in places at risk of fire, assuring unparalleled protection to their content.

The base-cover coupling is guaranteed by engineering plastic quarter-turn captive screws, the co-molded gasket offer constant protection against dust and liquids over time.



CUSTOM BUILT SOLUTION



The range of empty enclosures for distribution assemblies and junction boxes, of which the present catalogue shows just a selection, is paired by the equivalent pre-assembled versions available on SCAME System catalogue.

Beside standard configurations, according to the attention to the customer's needs that has always been at the base of its philosophy, SCAME is able to quickly design, manufacture

IONS



MBOX SERIES



DOMINO SERIES



ZENITH SERIES



KIOSK SERIES



MEGA SERIES



and supply state-of-the-art custom-built solutions. For any request regarding customized distribution assemblies, control stations or combination units, please contact the Technical Information Center by sending an email to export@scame.com.



Disconnecting a system is a serious matter.



Disconnecting a system is crucial when to ensuring people's safety. This is why SCAME has developed a comprehensive range of enclosed switch-disconnectors of which this chapter presents a small selection, capable of meeting the most common needs.

High-performance switches from 20 to 1600A, a selection of which is presented herein, capable of maintaining their rated current even in utilization category AC23A (switching of motors or other highly inductive loads).

The switches are contained in thermoplastic enclosures featuring large internal space to facilitate wiring operations and equipped with a black knob, which can be padlocked in either the ON or OFF position, for general applications, or a red knob with yellow tab for emergency use, in this case padlockable in the OFF position only.

For applications in heavy-duty environments, the thermoplastic enclosure is replaced by a sturdier one made of die-cast aluminium able to ensure greater mechanical resistance while keeping the switch performance and characteristics unaltered.



ISOLATORS Series
from page 62

Switch disconnectors - Thermoplastic enclosure

IP66/IP69

■ SURFACE MOUNTING - 20A ÷ 40A

ISOLATORS-TP Series



Poles	Dimensions	EMERGENCY SWITCHING		GENERAL USE		1/12
		20A	32A	20A	32A	
2P	105x150x82 mm	590.EM2012	590.EM2013	590.GE2012	590.GE2013	1/12
3P	105x150x82 mm	590.EM2015	590.EM2016	590.GE2015	590.GE2016	1/12
3P+N	105x150x82 mm	590.EM2015	590.EM2016	590.GE2015	590.GE2016	1/12
Poles	Dimensions	EMERGENCY SWITCHING		GENERAL USE		1/12
		32A	40A	32A	40A	
2P	105x150x82 mm	590.EM3212	590.EM3213	590.GE3212	590.GE3213	1/12
3P	105x150x82 mm	590.EM3215	590.EM3216	590.GE3215	590.GE3216	1/12
3P+N	105x150x82 mm	590.EM3215	590.EM3216	590.GE3215	590.GE3216	1/12
Poles	Dimensions	EMERGENCY SWITCHING		GENERAL USE		1/12
		40A	50A	40A	50A	
2P	105x150x82 mm	590.EM4012	590.EM4013	590.GE4012	590.GE4013	1/12
3P	105x150x82 mm	590.EM4015	590.EM4016	590.GE4015	590.GE4016	1/12
3P+N	105x150x82 mm	590.EM4015	590.EM4016	590.GE4015	590.GE4016	1/12

APPLICATION EXAMPLE





Poles	Dimensions	EMERGENCY SWITCHING		GENERAL USE		1/5
			63A		63A	
2P	155x210x107 mm		590.EM6302		590.GE6302	1/5
3P	155x210x107 mm		590.EM6303		590.GE6303	1/5
3P+N	155x210x107 mm		590.EM6305		590.GE6305	1/5
Poles	Dimensions	EMERGENCY SWITCHING		GENERAL USE		1/5
			80A		80A	
2P	155x210x107 mm		590.EM8002		590.GE8002	1/5
3P	155x210x107 mm		590.EM8003		590.GE8003	1/5
3P+N	155x210x107 mm		590.EM8005		590.GE8005	1/5
Poles	Dimensions	EMERGENCY SWITCHING		GENERAL USE		1/5
			100A		100A	
3P	155x210x107 mm		590.EM10003		590.GE10003	1/5
3P+N	155x210x107 mm		590.EM10005		590.GE10005	1/5

IP65



Poles	Dimensions	EMERGENCY SWITCHING		GENERAL USE		1/5
			125A		125A	
3P	228x308x128 mm		590.EM12503		590.GE12503	1/5
3P+N	228x308x128 mm		590.EM12505		590.GE12505	1/5



Poles	Dimensions	EMERGENCY SWITCHING		GENERAL USE		1/5
			160A		160A	
3P	308x338x128 mm		590.EM16003		590.GE16003	1/5
3P+N	308x338x128 mm		590.EM16005		590.GE16005	1/5

	Padlockable handle in one position (OFF).
	Padlockable handle in two positions (ON/OFF).
	OFF position = 3 padlocks
	ON position = 1 padlock

- 3P+N version with late break and early make neutral pole.
- Equipped with door locking.
- Switch disconnectors units suitable as spare parts available in the general catalogue and Command series catalogue.

■ SURFACE MOUNTING - 16A ÷ 40A

ISOLATORS-AL Series



Poles	Dimensions	EMERGENCY SWITCHING		GENERAL USE		1/12
		■	■	■	■	
		20A		20A		
2P	105x150x82 mm (*)	590.HEM2002		590.HGE2002		1/12
3P	105x150x82 mm (*)	590.HEM2003		590.HGE2003		1/12
3P+N	105x150x82 mm (*)	590.HEM2005		590.HGE2005		1/12
		32A		32A		
2P	105x150x82 mm (*)	590.HEM3202		590.HGE3202		1/12
3P	105x150x82 mm (*)	590.HEM3203		590.HGE3203		1/12
3P+N	105x150x82 mm (*)	590.HEM3205		590.HGE3205		1/12
		40A		40A		
2P	105x150x82 mm (*)	590.HEM4002		590.HGE4002		1/12
3P	105x150x82 mm (*)	590.HEM4003		590.HGE4003		1/12
3P+N	105x150x82 mm (*)	590.HEM4005		590.HGE4005		1/12

(*) Add ".A" suffix at the end of the catalogue number for bottom cable entries only.

■ SURFACE MOUNTING - 63A ÷ 100A

ISOLATORS-AL Series



Poles	Dimensions	EMERGENCY SWITCHING		GENERAL USE		1/5
		■	■	■	■	
		63A		63A		
2P	150x210x107 mm	590.HEM6302		590.HGE6302		1/5
3P	150x210x107 mm	590.HEM6303		590.HGE6303		1/5
3P+N	150x210x107 mm	590.HEM6305		590.HGE6305		1/5
		80A		80A		
2P	150x210x107 mm	590.HEM8002		590.HGE8002		1/5
3P	150x210x107 mm	590.HEM8003		590.HGE8003		1/5
3P+N	150x210x107 mm	590.HEM8005		590.HGE8005		1/5
		100A		100A		
3P	150x210x107 mm	590.HEM10003		590.HGE10003		1/5
3P+N	150x210x107 mm	590.HEM10005		590.HGE10005		1/5

■ SURFACE MOUNTING - 125A ÷ 160A

ISOLATORS-AL Series



Poles	Dimensions	125A		1
		EMERGENCY SWITCHING	GENERAL USE	
3P	264x315x122 mm			1
3P+N	264x315x122 mm			1



Poles	Dimensions	160A		1
		EMERGENCY SWITCHING	GENERAL USE	
3P	315x410x153 mm			1
3P+N	315x410x153 mm			1

CABLE ENTRY OPTIONS

Maximum cable entry flexibility with Top and Bottom double open threaded holes available with standard version from 20 up to 100A.

Special version with blank side on top and double open threaded holes cable entries on bottom to prevent loss of IP degree due to wrong installation or accidental alteration of the caps provided. For bottom cable entry, add ".A" suffix at the end of catalogue number.



- 3P+N version with late break and early make neutral pole.
- Equipped with door locking.
- Switch disconnectors units suitable as spare parts available in the general catalogue and Command series catalogue.
- (*) Add ".A" suffix at the end of the catalogue number for bottom cable entries only.

	Padlockable handle in one position (OFF).
	Padlockable handle in two positions (ON/OFF).
	OFF position = 3 padlocks
	ON position = 1 padlock



20 May 1984. On this day, SCAME presented as a world premiere, the first one-piece system adapter.



More than 30 years have gone by since then, but the needs at the base of the “industrial adaptor” product are still the same: the possibility to couple plugs and sockets which are incompatible one with the other due to different configuration, thus avoiding quick-fix solutions such as inserting directly in the socket cables with no isolator, something that very common although extremely dangerous for the user.

In reply to all this, over the years SCAME has developed the **ADAPTO** Series, which includes simple system adapters featuring an industrial plug 16A 2P+E and socket in different domestic standards.

If the connection takes place by means of industrial plugs and sockets, the range is completed by 2 or 3-way adaptors available with IP 44 or IP66/67 protection rating, the latter suited to multiplying power distribution lines even under the heaviest-duty conditions, with dust, water or sludge present in huge quantities.

Such convenient use has only one limitations: as prescribed by the Reference Standards, all adapters are for temporary use only.

ADAPTO Series
from page 68



Industrial adaptors

ONE-WAY ADAPTORS

ADAPTO Series

IP20



Industrial plug	Domestic socket italian standard				
IEC 60309 2P+E - 16A 250V~ - 6h	Italian P40	16A 2P+E	610.371	10/100	
IEC 60309 2P+E - 16A 250V~ - 6h	Swiss	10A 2P+E	610.368	10/100	
IEC 60309 2P+E - 16A 250V~ - 6h	German (*)	16A 2P+E	610.373	10/100	
IEC 60309 2P+E - 16A 250V~ - 6h	French	16A 2P+E	610.374	10/100	
IEC 60309 2P+E - 16A 250V~ - 6h	British	13A 2P+E	610.375	10/100	
IEC 60309 2P+E - 16A 250V~ - 6h	British	15A 2P+E	610.376	10/100	
IEC 60309 2P+E - 16A 250V~ - 6h	Brazilian	10A 2P+E	610.394	10/100	
IEC 60309 2P+E - 16A 250V~ - 6h	Brazilian	10A 2P+E	610.395	10/100	
IEC 60309 2P+E - 16A 250V~ - 6h	New Zealand	10A 2P+E	610.369	10/100	
IEC 60309 2P+E - 16A 250V~ - 6h	Argentine	16A 2P+E	610.378	10/100	
IEC 60309 2P+E - 16A 250V~ - 6h	South African	15A 2P+E	610.367	10/100	

(*) Shutterless socket.



Industrial plug	Domestic socket italian standard				
IEC 60309 2P+E - 16A 250V~ - 6h	German	16A 2P+E	610.381	10/100	
IEC 60309 2P+E - 16A 250V~ - 6h	French	16A 2P+E	610.391	10/100	
IEC 60309 2P+E - 16A 250V~ - 6h	British	13A 2P+E	610.392	10/100	

PHASE SEQUENCE ADAPTORS

ADAPTO Series

IP44



Plug	Socket	Voltage		
3P+E - 16A - 6h	3P+E - 16A - 6h	380/415 V	610.3646	10/50

CURRENT ADAPTORS FROM 32A TO 16A

ADAPTO Series

IP44



Plug	Socket	Voltage		
3P+E - 32A - 6h	3P+E - 16A - 6h	380/415 V	610.3666	10/50

CONFIGURATION ADAPTORS FROM 3P+N+E TO 3P+E

ADAPTO Series

IP44



Plug	Socket	Voltage		
3P+N+E - 16A - 6h	3P+E - 16A - 6h	380/415 V	610.3746	10/50

■ 2-WAY ADAPTORS WITH APPLIANCE INLET

ADAPTO Series

IP44



Available socket outlet		Power supply plug	16A	1/6
2P+E	3P+E			
2		16A 2P+E 6h	600.1623	1/6
	2	16A 3P+E 6h	600.1626	1/6
	2	16A 3P+N+E 6h	600.1627	1/6

■ 2-WAY ADAPTORS WITH APPLIANCE INLET

ADAPTO Series

IP66



Available socket outlet		Power supply plug	16A	1/6
2P+E	3P+E			
2		16A 2P+E 6h	601.1623	1/6
	2	16A 3P+E 6h	601.1626	1/6
	2	16A 3P+N+E 6h	601.1627	1/6

■ 3-WAY ADAPTORS

ADAPTO Series

IP44



Available socket outlet		Power supply Plug	Cable	16A	1/10
2P+E	3P+E				
3		16A 2P+E	3x2,5	603.3005-062	1/10
	3	16A 3P+E	3x2,5	603.3005-063	1/10
	3	32A 3P+E	3x2,5	603.3005-058	1/10

■ 3-WAY ADAPTORS

ADAPTO Series

IP66



Available socket outlet		Power supply Plug	Cable	16A	1/10
2P+E	3P+E				
3		16A 2P+E	3x2,5	603.3505-062	1/10
	3	16A 3P+E	3x2,5	603.3505-063	1/10
	3	32A 3P+E	3x2,5	603.3505-058	1/10

■ 3-WAY VERSION WITH APPLIANCE INLET

ADAPTO Series

IP44



Available socket outlet			Power supply plug	16A	1/6
2P+E	2P+E	3P+E			
	3		16A 2P+E	606.3005-062	1/6
		3	16A 3P+E	606.3005-063	1/6
3			16A 2P+E	606.3005-479	1/6

■ 3-WAY ADAPTORS WITH APPLIANCE INLET

ADAPTO Series

IP66



Available socket outlet			Power supply plug	16A	1/6
2P+E	2P+E	3P+E			
	3		16A 2P+E	606.3505-062	1/6
		3	16A 3P+E	606.3505-063	1/6
3			16A 2P+E	606.3505-479	1/6

6

WEATHERPROOF WIRING ACCESSORIES

- Weatherproof switches and sockets



With SCAME, safety is like one of the family.



UNIBOX Series enclosures are made to accommodate control devices and sockets, and are suited to the realisation of domestic and residential electrical systems, as well as electrical systems for the small-business and tertiary sectors. They are also a useful complement in industrial installations.

Usually installed in stores and warehouses, technical rooms, elevator shafts and garages, thanks to their high IP protection rating, the UNIBOX Series enclosures can also be installed on the outside of buildings, in areas lashed by the rain, such as porches and gardens, parking areas and yards.

UNIBOX Series
from page 72



With **PROTECTA**, SCAME takes an additional step forward with respect to UNIBOX.

The extremely high IP66 protection rating, normally featured in products for industrial applications, makes its debut in the domestic world for all those situations requiring extra safety by the user. Safety that is guaranteed by the innovative protection system of the socket even with the plug inserted. A garden with an irrigation system, a poolside low wall, or a laboratory work bench, a small workshop or a facility featuring the presence of high-pressure water jets are all ideal situations for the PROTECTA Series devices, which for this reason are suited for use in the tertiary and light industrial field as well as in the residential one.

The result of revolutionary design and of the use of specific raw materials, PROTECTA does not fear the sun, rain or dust, always proving itself ready to meet a wide range of needs.

PROTECTA Series
from page 73



Gang	Description		
	1 x bell push (•)	136.5121-333	32
1 gang	1 x 2P switch 20A for water heater	136.5121-302	32
	1 x 1P switch (•)	136.5121-303	32



Gang	Description		
	2 x 1P switch (•)	136.5122-303	32
2 gang	1 x 16A French socket without switch	136.5122-411	32
	1 x 16A German socket without switch	136.5122-412	32
	1 x 13A British socket without switch	136.5122-413	32



Gang	Description		
	3 x 1P switch (•)	136.5123-303	24
3 gang	1 x 16A French socket with switch (•)	136.5123-411	24
	1 x 16A German socket with switch (•)	136.5123-412	24
	1 x 13A British socket with switch (•)	136.5123-413	24



Gang	Description		
	4 x 1P switch (•)	136.5124-303	24
2+2 gang	2 x 16A French socket without switch	136.5124-411	24
	2 x 16A German socket without switch	136.5124-412	24
	2 x 13A British socket without switch	136.5124-413	24



Gang	Description		
	6 x 1P switch (•)	136.5126-303	16
3+3 gang	2 x 16A French socket with switch (•)	136.5126-411	16
	2 x 16A German socket with switch (•)	136.5126-412	16
	2 x 13A British socket with switch (•)	136.5126-413	16

(•) Neon available as accessory.

■ **CONTROL DEVICES M95 (95x95mm)** PROTECTA Series



Description					
One way switch - single pole	1 gang	10AX - 250V~	137.5011	1/12	
One way switch - single pole	2 gang	10AX - 250V~	137.5021	1/12	
Two way switch - single pole	1 gang	10AX - 250V~	137.5211	1/12	
Double pole switch	1 gang	20A - 250V~	137.3462	1/12	
Bell push switch single pole "PRESS"	1 gang	20A - 250V~	137.5311P	1/12	

■ **SOCKET OUTLETS M95 (95x95mm)** PROTECTA Series



Description					
French	16A 2P+E	137.6411	1/12		
German	16A 2P+E	137.6407	1/12		
Argentinian	16A 2P+E	137.6424	1/12		
Swiss	16A 2P+E	137.6417	1/12		
Brazilian	16A 2P+E	137.6421	1/12		
British BS 1363	13A 2P+E	137.6001	1/12		
RJ45 cat. 5E	RJ45 cat. 5e	137.6481.50	1/12		

■ **SWITCH SOCKET OUTLETS** PROTECTA Series



Description		Dimensions			
Single D.P. switchsocket	13A 2P+E	M115 (115x115mm)	137.6022	1/12	
Single S.P. switchsocket	15A 2P+E	M115 (115x115mm)	137.6111	1/12	



Description		Dimensions			
Double D.P. switchsocket	13A 2P+E	M195 (195x115mm)	137.6042	1/12	
Double D.P. switchsocket + RCD	13A 2P+E	M195 (195x115mm)	139.6043	1/12	

■ **SPUR UNIT** PROTECTA Series



Description	Dimensions			
13A Switch + fuse	M115 (115x115mm)	137.5410	1/12	

PROTECTA SERIES - TECHNICAL CHARACTERISTICS



Tinted polycarbonate cover to see inside

Polycarbonate box shockproof, chemical and UV resistant

Ø20 cable entries

Stainless steel screws

A wing on the lid assist one-handed opening

Shuttered sockets

Specifically high formulated gel seal to maintain protection degree when the plug is inserted

7

INSTALLATION ACCESSORIES



When the details make the difference.



Cable glands, joint sleeves, threaded caps and nuts made of thermoplastic material, particularly useful installing switchboards.

Steel pins with insulated collar and cable clips made of thermoplastic material, both flat and rounded

Self-locking cable ties made of self-extinguishing techno-polymer for indoor wiring and of RILSAN® for outdoor wiring, which make it possible to firmly hold the wiring in place inside the distribution boards and the conduits in the systems.

In order to realise safe and reliable wiring, SCAME offers a range of wire connectors, insulated terminals strips, multi-way wire connectors and terminal strips capable of meeting the needs of modern wiring techniques in the residential, industrial and tertiary sectors.

A wide range of accessories for conduits suited to the realisation of exposed systems for rigid conduit made of thermoplastic material with the particular feature, in the **SMART** Series, of the co-moulded seal for greater reliability over time of the protection and seal characteristics.

Installation accessories

CONDUIT TO CONDUIT COUPLINGS - IP66/IP67

TUBE Series



Conduit Ø mm	Colour	90° BEND		CONDUIT COUPLING	
16		866.216	10/200	866.316	10/200
20		866.220	10/200	866.320	10/200
25		866.225	10/160	866.325	10/160
32		866.232	10/100	866.332	10/100
40		866.240	5/50	866.340	5/50
50		866.250	5/30	866.350	5/30

CONDUIT TO CONDUIT COUPLINGS - IP65

TUBE Series



Conduit Ø mm	Colour	90° BEND		90° FLEXIBLE BEND		CONDUIT COUPLING	
16		864.216	50/600	864.2016	50/800	864.316	50/800
20		864.220	50/400	864.2020	50/400	864.320	50/600
25		864.225	25/200	864.2025	25/300	864.325	50/400
32		864.232	25/100	864.2032	20/160	864.332	25/200
40		864.240	15/60	864.2040		864.340	20/160
50		864.250	10/40	864.2050		864.350	10/80

- Made of rigid, insulated, self-extinguishing and impact-resistant thermoplastic material.

CONDUIT TO CONDUIT COUPLINGS - IP40

TUBE Series



Conduit Ø mm	Colour	INSPECTION ELBOW		FLAT TEE INSPECTION		BEND WITH TWO COUPLINGS		CONDUIT COUPLING	
16		860.1116/G	50/800	860.1216/G	50/800	862.916/G	50/800	862.1016/G	100/1200
20		860.1120/G	50/600	860.1220/G	50/400	862.920/G	50/400	862.1020/G	100/800
25		860.1125/G	50/400	860.1225/G	25/300	862.925/G	25/200	862.1025/G	50/600
32		860.1132/G	25/200	860.1232/G	20/160	862.932/G	25/150	862.1032/G	50/300
40						862.940/G	15/60	862.1040/G	20/160
50						862.950/G	10/40	862.1050/G	20/120

CONDUIT TO BOX COUPLINGS - IP66/IP67

Serie SMART


CO-INJECTION MOULDED GASKET

Conduit Ø mm	Colour	Thread	Ø assembly hole (mm)	Overall (mm)	CONDUIT COUPLING	
16		16÷18	16÷18	Ø 26	866.516	10/240
20		20÷22	20÷22	Ø 30	866.520	10/240
25		25÷28	25÷28	Ø 35	866.525	10/200
32		32÷35	32÷35	Ø 46	866.532	10/100
40		40÷44	40÷44	Ø 55	866.540	5/60
50		50÷54	50÷54	Ø 62	866.550	5/40

CONDUIT TO BOX COUPLINGS - IP65

TUBE Series



External conduit Ø (mm)	Metric thread	Fixing hole Ø (mm)	Overall Ø (mm)	CONDUIT COUPLING		FLEXIBLE COUPLING	
16	M16x1,5	16÷18	Ø 26	864.516	50/800	864.9016	50/800
20	M20x1,5	20÷22	Ø 30	864.520	50/600	864.9020	50/600
25	M25x1,5	25÷28	Ø 35	864.525	50/400	864.9025	50/400
32	M32x1,5	32÷35	Ø 46	864.532	25/300	864.9032	25/300
40	M40x1,5	40÷44	Ø 55	864.540	25/200	864.9040	25/200
50	M50x1,5	50÷54	Ø 62	864.550	15/120	864.9050	15/120

CONDUIT COUPLING FOR FLEXIBLE TUBE - IP40

TUBE Series



Conduit Ø mm	Colour		
16	Transparent	862.1916	100/2000
20	Transparent	862.1920	100/1200
25	Transparent	862.1925	100/700
32	Transparent	862.1935	100/400
40	Transparent	862.1940	300
50	Transparent	862.1950	150

CO-INJECTION MOULDED GASKET

The use of a co-injection moulding system makes it possible to turn the technopolymer gasket into an extension of the piece and disguise it as part of the pipe. It also provides a greater degree of sealing efficiency and makes it easier to insert pipe fittings without squashing or deforming the gasket.



Installation accessories

CONDUIT TO SHEATH COUPLINGS - IP66/IP67

SMART Series



CO-INJECTION MOULDED GASKET

Conduit Ø mm	Colour	Spiral sheath internal Ø (mm)	CONDUIT COUPLING	
16		16	866.816	10/240
20		20	866.820	10/240
25		25	866.825	10/200
32		32	866.832	10/100
40		40	866.840	5/60
50		50	866.850	5/40

CO-INJECTION MOULDED GASKET

The use of a co-injection moulding system makes it possible to turn the technopolymer gasket into an extension of the piece and disguise it as part of the pipe. It also provides a greater degree of sealing efficiency and makes it easier to insert pipe fittings without squashing or deforming the gasket.



CONDUIT TO SHEATH COUPLINGS - IP65

TUBE Series



External conduit Ø (mm)	Internal sheath Ø (mm)			
		WITH BUSH	NORMAL	
16	12	864.7016	864.716	50/800
	16	864.8016	864.816	50/600
20	16	864.7020	864.720	50/600
	20	864.8020	864.820	50/400
25	20	864.7025	864.725	50/400
	25	864.8025	864.825	25/200
32	25	864.7032	864.732	25/200
	32	864.8032	864.832	20/160
40	32	864.7040	864.740	20/160
	40	864.8040	864.840	15/120
50	40	864.7050	864.750	15/120
	50	864.8050	864.850	10/80

■ SHEATH TO BOX COUPLINGS - IP65

TUBE Series



Thread	Sheat Ø (mm)	Fixing hole Ø (mm)	Overall Ø (mm)	WITH BUSH	NORMAL	
PG11	12	18÷20	25	864.0601	864.601	50/1200
PG13,5	12	20÷22	25	864.0603	864.603	50/1200
PG13,5	16	20÷22	30	864.0605	864.605	50/800
PG16	16	22÷24	30	864.0606	864.606	50/800
PG21	20	28÷30	34	864.0607	864.607	50/400
PG29	25	36÷38	41	864.0609	864.609	25/300
PG36	32	46÷50	56	864.0611	864.611	25/200
M16x1,5	10			-	864.651	50/1200
M16x1,5	12			864.0653	864.653	50/1200
M20x1,5	16			864.0655	864.655	50/800
M25x1,5	20			864.0657	864.657	50/400
M32x1,5	25			864.0659	864.659	25/300
M40x1,5	32			864.0661	864.661	25/200
M50x1,5	40			864.0663	864.663	15/120
M63x1,5	50			864.0665	864.665	10/80

■ CONDUIT FIXING ACCESSORIES

FIXER Series



Conduit Ø mm	COLOUR	
16	860.1316/G	100/1000
20	860.1320/G	100/1000
25	860.1325/G	100/800
32	860.1332/G	100/800
40	860.1340/G	50/400
50	860.1350/G	25/250

■ COLLAR CLIPS

FIXER Series



Conduit Ø (mm) from to	COLOUR	
13 - 32	860.1616	100/1000
40 - 63	860.1640	100/500

Installation accessories

■ CABLE GLANDS WITH DEVICE TO PREVENT ANY UNSCREWING - IP66/IP67

UNION Series



Cable outlet	A ø fixing hole	B cable size ø	C spanner size	thread length	Spanner coupler (N/m)		WITH NUT Standard RAL 7035 GREY	📐
					nut	seal		
PG7	13	3 - 6	15	9,5	2,5	2,5	805.3340	50/600
PG9	16	4 - 8	19	9,5	4	2,5	805.3341	50/600
PG11	19	5 - 10	22	10	5,5	5	805.3342	25/500
PG13,5	21	7 - 12	24	12	6	5	805.3343	25/500
PG16	23	10 - 14	27	12	6	5,5	805.3344	25/300
PG21	29	13 - 18	33	14	9	7	805.3345	25/400
PG29	37,5	18 - 25	42	15	14	10	805.3346	25/350
PG36	47,5	22 - 32	53	17,5	15	12,5	805.3347	10/140
PG42	54,5	30 - 38	60	19	15	12,5	805.3348	10/100
PG48	60	34 - 44	68	20	15	12,5	805.3349	10/100
M12X1,5	12	3 - 6	15	9,5	2,5	2,5	805.5512	50/600
M16X1,5	16	4 - 8	19	9,5	4	2,5	805.5516	50/600
M20X1,5	20	7 - 12	24	12	6	5	805.5520	25/500
M25X1,5	25	13 - 18	33	14	9	5,5	805.5525	25/400
M32X1,5	32	18 - 25	42	15	14	7	805.5532	25/350
M40X1,5	40	22 - 32	53	17,5	15	11,5	805.5540	10/140
M50X1,5	50	30 - 38	60	19	15	11,5	805.5550	10/100
M63X1,5	63	34 - 44	68	14	15	11,5	805.5563	10/100




■ ROUND CLIPS

FASTY Series



For cables (mm)	Pin (mm)	COLOUR		📐
		█	█	
Ø 3÷4	1,8x18	830.30/3-4	830.30/3-4G	100/5000
Ø 5	2 x21	830.30/5	830.30/5G	100/5000
Ø 6	2x21	830.30/6	830.30/6G	100/5000
Ø 7	2x21	830.30/7	830.30/7G	100/5000
Ø 8	2x21	830.30/8	830.30/8G	100/5000
Ø 10	2x27	830.30/10	830.30/10G	100/5000
Ø 12	2x27	830.30/12	830.30/12G	100/3000
Ø 14	2x27		830.30/14G	100/3000
Ø 16	2x35		830.30/16G	100/5000
Ø 19	2,5x45		830.30/19G	100/3000
Ø 22	2,5x45		830.30/22G	100/1000
Ø 26	2,7x50		830.30/26G	100/1000
Ø 28	2,7x60		830.30/28G	100/1000
Ø 32	2,7x60		830.30/32G	100/1000




Dimensions (mm)	Grip capacity min-max Ø (mm)	Tensile strength (kg)	COLOUR		
					
2,2x75	0,75÷15	6,12	839.42080	839.52080	100/2000
2,5x98	1÷21	8,16	839.42100	839.52100	100/2000
2,5x135	1÷32	8,16	839.42120	839.52120	100/2000
2,6x160	1÷40	8,16	839.42160	839.52160	100/2000
2,6x200	1÷50	8,16	839.42200	839.52200	100/2000
3,6x140	2÷35	13,26	839.43140	839.53140	100/2000
3,6x200	2÷50	13,26	839.43200	839.53200	100/2000
3,6x290	2÷80	13,26	839.43300	839.53300	100/2000
3,6x370	2÷103	13,26	839.43370	839.53370	100/2000
4,8x178	2÷45	22,44	839.44190	839.54190	100/2000
4,8x200	3÷50	22,44	839.44200	839.54200	100/2000
4,8x250	3÷68	22,44	839.44250	839.54250	100/2000
4,8x290	3,5÷79	22,44	839.44300	839.54300	100/2000
4,8x360	3,5÷103	22,44	839.44370	839.54370	100/2000
4,8x430	3,5÷115	22,44	839.44430	839.54430	100/2000
7,8x180	3,5÷45	55,08	839.47200	839.57200	100/2000
7,8x300	4÷80	55,08	839.47290	839.57290	100/2000
7,8x365	8÷100	55,08	839.47370	839.57370	100/2000
9x780	32÷233	71,4	839.47780	839.57780	100/1000

Installation accessories

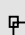
INSULATED WIRE CONNECTORS T85 CONNECTO Series



Connecting capacity (mm ²)	Pitch (mm)	COLOUR TRANSPARENT	
1,5	17,5	810.372/TR	100/600
2,5	24	810.374/TR	100/1000
4	32	810.375/TR	100/1000
6	41	810.376/TR	100/1000
10	57	810.378/TR	100/1000
16	76	810.379/TR	50/500
25	101	810.425/TR	10/100
35	125	810.435/TR	5/250

INSULATED WIRE CONNECTORS T85 - STRIPS CONNECTO Series

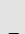

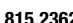
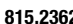
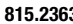
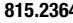
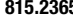
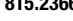


Connecting capacity (mm ²)	Pitch (mm)	Length (mm)	COLOUR TRANSPARENT	
1,5	9,8	96	812.372	10/200
2,5	12,2	120	812.374	10/400
4	12,2	120	812.375	10/400
6	14,7	145	812.376	10/200
10	17,0	168	812.378	10/150
16	21,3	211	812.379	10/60

TERMINAL - STRIPS CONNECTO Series

CONNECTO Series



Connecting capacity (mm ²)	Pitch (mm)	Dimen. (mm)	Fixing hole Ø (mm)	Rated voltage	T140		T85		
					COLOUR TRANSPARENT	COLOUR	COLOUR	COLOUR	
2,5	8	95,5x15,5x16	2,6	250V~	815.1361		815.2361	815.2361B	50/800
4	10	120x16,6x17,4	3,5	450V~	815.1362		815.2362	815.2362B	50/400
6	10	120x16,6x17,4	3,5	450V~	815.13625		815.23625	815.23625B	50/400
10	11,5	138x23,5x20,5	3,5	450V~	815.1363		815.2363	815.2363B	25/300
16	14,5	174x30x24	4,3	450V~	815.1364		815.2364	815.2364B	25/150
25	17,5	210x38x36	4,3	750V~	815.1365		815.2365	815.2365B	15/60
35	22	264x46x39	5,5	750V~	815.1366		815.2366	815.2366B	10/40

INDEX BY
PRODUCT
NUMBER



www.scame.com

Index by product number

CODE	PAGE	CODE	PAGE	CODE	PAGE
101.6407.GD	49	213.1637	8	230.16030	22
101.6411.GD	49	213.1637P	8	230.3200	22
101.6413.GD	49	213.1637RV	8	230.3201	22
101.6417.GD	49	213.3230	8	230.32030	22
101.6424.GD	49	213.3230F	8	235.1600	23
101.6428.GD	49	213.3233	8	235.1601	23
110.3100	9	213.3233F	8	235.16030	23
110.3150	9	213.3236	8	235.3200	23
110.3160	9	213.3236F	8	235.3201	23
136.5121-302	72	213.3236RV	8	235.32030	23
136.5121-303	72	213.3237	8	240.1690	12
136.5121-333	72	213.3237F	8	240.1693	12
136.5122-303	72	213.3237RV	8	240.1696	12
136.5122-411	72	213.6333	8	240.1696RV	12
136.5122-412	72	213.6336	8	240.1697	12
136.5122-413	72	213.6337	8	240.1697RV	12
136.5123-303	72	214.1630	8	240.3290	12
136.5123-411	72	214.1633	8	240.3293	12
136.5123-412	72	214.1636	8	240.3296	12
136.5123-413	72	214.1637	8	240.3296RV	12
136.5124-303	72	214.3230	8	240.3297	12
136.5124-411	72	214.3233	8	240.3297RV	12
136.5124-412	72	214.3236	8	240.6393T	12
136.5124-413	72	214.3237	8	240.6396T	12
136.5126-303	72	218.12536	10	240.6397T	12
136.5126-411	72	218.12537	10	242.1690	18
136.5126-412	72	218.1630	10	242.1693	18
136.5126-413	72	218.1630P	10	242.1696	18
137.3462	73	218.1633	10	242.1697	18
137.5011	73	218.1633P	10	242.3290	18
137.5021	73	218.1636	10	242.3293	18
137.5211	73	218.1636P	10	242.3296	18
137.5311P	73	218.1636RV	10	242.3297	18
137.6001	73	218.1637	10	243.1690	18
137.6022	73	218.1637P	10	243.1693	18
137.6042	73	218.1637RV	10	243.1696	18
137.6043	73	218.3230	10	243.1696RV	18
137.6111	73	218.3230F	10	243.1697	18
137.6407	73	218.3233	10	243.1697RV	18
137.6411	73	218.3233F	10	243.3290	18
137.6417	73	218.3236	10	243.3293	18
137.6421	73	218.3236F	10	243.3296	18
137.6424	73	218.3236RV	10	243.3296RV	18
137.6481.50	73	218.3237	10	243.3297	18
213.1630	8	218.3237F	10	243.3297RV	18
213.1630P	8	218.3237RV	10	243.6393	18
213.1633	8	218.6333	10	243.6396	18
213.1633P	8	218.6336	10	243.6397	18
213.1636	8	218.6337	10	245.12596T	13
213.1636P	8	230.1600	22	245.12597T	13
213.1636RV	8	230.1601	22	245.1690	13

CODE	PAGE
245.1693	13
245.1696	13
245.1696RV	13
245.1697	13
245.1697RV	13
245.3290	13
245.3293	13
245.3296	13
245.3296RV	13
245.3297	13
245.3297RV	13
245.6393T	13
245.6396T	13
245.6397T	13
247.1690	19
247.1693	19
247.1696	19
247.1697	19
247.3290	19
247.3293	19
247.3296	19
247.3297	19
248.12596	19
248.12597	19
248.1690	19
248.1693	19
248.1696	19
248.1696RV	19
248.1697	19
248.1697RV	19
248.3290	19
248.3293	19
248.3296	19
248.3296RV	19
248.3297	19
248.3297RV	19
248.6393	19
248.6396	19
248.6397	19
313.1640	9
313.1640P	9
313.1643	9
313.1643P	9
313.1646	9
313.1646P	9
313.1647	9
313.1647P	9
313.3240	9
313.3240F	9
313.3243	9
313.3243F	9
313.3246	9
313.3246F	9
313.3247	9
313.3247F	9
313.6343	9
313.6346	9
313.6347	9
330.1605	22
330.1606	22
330.16080	22
330.3205	22
330.3206	22
330.32080	22
335.1605	23
335.1606	23
335.16080	23
335.3205	23
335.3206	23
335.32080	23
400.1670	30
400.1683	30
400.1686	30

CODE	PAGE
313.3246	9
313.3246F	9
313.3247	9
313.3247F	9
313.6343	9
313.6346	9
313.6347	9
314.1640	9
314.1643	9
314.1646	9
314.1647	9
314.3240	9
314.3243	9
314.3246	9
314.3247	9
318.12546	11
318.12547	11
318.1640	11
318.1640P	11
318.1643	11
318.1643P	11
318.1646	11
318.1646P	11
318.1647	11
318.1647P	11
318.3240	11
318.3240F	11
318.3243	11
318.3243F	11
318.3246	11
318.3246F	11
318.3247	11
318.3247F	11
318.6343	11
318.6346	11
318.6347	11
330.1605	22
330.1606	22
330.16080	22
330.3205	22
330.3206	22
330.32080	22
335.1605	23
335.1606	23
335.16080	23
335.3205	23
335.3206	23
335.32080	23
400.1670	30
400.1683	30
400.1686	30

CODE	PAGE
400.1687	30
400.2416	32
400.2420	32
400.3270	30
400.3283	30
400.3286	30
400.3287	30
402.1670	38
402.1683	38
402.1686	38
402.1687	38
402.3270	38
402.3283	38
402.3286	38
402.32864	38
402.3287	38
402.6383	38
402.6386	38
402.6387	38
403.1683	40
403.1683-M	40
403.1686	40
403.1686-M	40
403.1687	40
403.1687-M	40
403.2416	39
403.2416-F	39
403.2420	39
403.3283	40
403.3283-M	40
403.3286	40
403.32864	40
403.32864-M	40
403.3286-M	40
403.3287	40
403.3287-M	40
403.6383	40
403.6383-M	40
403.6386	40
403.6386-M	40
403.6387	40
403.6387-M	40
405.1670	31
405.1683	31
405.1686	31
405.1687	31
405.2416	32
405.2420	32
405.3270	31
405.3283	31
405.3286	31

Index by product number

CODE	PAGE	CODE	PAGE	CODE	PAGE
405.32864	31	413.1663	20	428.1660	21
405.3287	31	413.1663F	20	428.1663	21
405.6383	31	413.1666	20	428.1666	21
405.6386	31	413.1666F	20	428.1667	21
405.6387	31	413.1667	20	428.3260	21
409.0405	30	413.1667F	20	428.3263	21
409.0407	30	413.3260	20	428.3266	21
409.0411	30	413.3260F	20	428.3267	21
409.0412	30	413.3263	20	428.6363	21
409.0413	30	413.3263F	20	428.6366	21
409.0417	30	413.3266	20	428.6367	21
409.0421	30	413.3266F	20	430.1615	22
409.0424	30	413.3267	20	430.1616	22
409.0427	30	413.3267F	20	430.16180	22
409.0428	30	413.6363	20	430.3215	22
409.0429	30	413.6366	20	430.3216	22
409.1405	30	413.6367	20	430.32180	22
409.1407	30	418.12566	21	435.1615	23
409.1411	30	418.12567	21	435.1616	23
409.1412	30	418.1660	21	435.16180	23
409.1413	30	418.1660F	21	435.3216	23
409.1417	30	418.1663	21	435.32180	23
409.1421	30	418.1663F	21	435.3226	23
409.1424	30	418.1666	21	500.1670	30
409.1427	30	418.1666F	21	500.1683	30
409.1428	30	418.1667	21	500.1686	30
409.1429	30	418.1667F	21	500.1687	30
409.2405	30	418.3260	21	500.2420	32
409.2407	30	418.3260F	21	500.3270	30
409.2411	30	418.3263	21	500.3283	30
409.2412	30	418.3263F	21	500.3286	30
409.2413	30	418.3266	21	500.3287	30
409.2417	30	418.3266F	21	503.12586	43
409.2421	30	418.3267	21	503.12586-F	43
409.2424	30	418.3267F	21	503.12586-FS	43
409.2427	30	418.6363	21	503.12586-M	43
409.2428	30	418.6366	21	503.12586-RM	43
409.2429	30	418.6367	21	503.12586-T	43
409.3405	30	423.1660	20	503.12587	43
409.3407	30	423.1663	20	503.12587-F	43
409.3411	30	423.1666	20	503.12587-FS	43
409.3412	30	423.1667	20	503.12587-M	43
409.3413	30	423.3260	20	503.12587-RM	43
409.3417	30	423.3263	20	503.12587-T	43
409.3421	30	423.3266	20	505.1670	31
409.3424	30	423.3267	20	505.1683	31
409.3427	30	423.6363	20	505.1686	31
409.3428	30	423.6366	20	505.1687	31
409.3429	30	423.6367	20	505.2420	32
413.1660	20	428.12566	21	505.3270	31
413.1660F	20	428.12567	21	505.3283	31

CODE	PAGE
505.3286	31
505.32864	31
505.3287	31
505.6383	31
505.6386	31
505.6387	31
512.1650	14
512.1653	14
512.1656	14
512.1657	14
512.3250	14
512.3253	14
512.3256	14
512.3257	14
513.1650	14
513.1650T	14
513.1653	14
513.1653T	14
513.1656	14
513.1656T	14
513.1657	14
513.1657T	14
513.3250	14
513.3250T	14
513.3253	14
513.3253T	14
513.3256	14
513.3256T	14
513.3257	14
513.3257T	14
513.6353T	14
513.6356T	14
513.6357T	14
514.1650	15
514.1653	15
514.1656	15
514.1657	15
514.3250	15
514.3253	15
514.3256	15
514.3257	15
517.1650	16
517.1653	16
517.1656	16
517.1657	16
517.3250	16
517.3253	16
517.3256	16
517.3257	16
518.1650T	16
518.1653T	16

CODE	PAGE
518.1656T	16
518.1657T	16
518.3250T	16
518.3253T	16
518.3256T	16
518.3257T	16
518.6353T	16
518.6356T	16
518.6357T	16
518.12556T	16
518.12557T	16
522.1650	15
522.1653	15
522.1656	15
522.1657	15
522.3250	15
522.3253	15
522.3256	15
522.3257	15
527.1650	17
527.1653	17
527.1656	17
527.1657	17
527.3250	17
527.3253	17
527.3256	17
527.3257	17
560.1670	34
560.1683	34
560.1686	34
560.1687	34
560.3270	34
560.3283	34
560.3286	34
560.3287	34
561.1670	35
561.1683	35
561.1686	35
561.1687	35
561.3270	35
561.3283	35
561.3286	35
561.32864	35
561.3287	35
561.6383	35
561.6386	35
561.6387	35
565.2416	36
565.2416/S	36
565.2516	36
565.2516/S	36

CODE	PAGE
567.1670	34
567.1683	34
567.1686	34
567.1687	34
567.3270	34
567.3283	34
567.3286	34
567.3287	34
568.1670	35
568.1683	35
568.1686	35
568.1687	35
568.3270	35
568.3283	35
568.3286	35
568.32864	35
568.3287	35
568.6383	35
568.6386	35
568.6387	35
570.0016	24
570.0016	25
570.0032	25
570.0116	25
570.0116.20	24
570.0116.20	25
570.0116.25	24
570.0116.25	25
570.0132	25
570.0132.32	25
570.2041	53
570.2051	53
570.2061	53
570.2091	53
570.2092	53
570.2093	53
570.4041	24
570.4051	24
570.4061	24
570.4091	24
570.4092	24
570.4093	24
570.6405	24
570.6407	24
570.6411	24
570.6413	24
570.6414	24
570.6417	24
570.6421	24
570.6424	24
570.6427	24

Index by product number

CODE	PAGE	CODE	PAGE	CODE	PAGE
570.6428	24	579.5111	41	590.HEM12505	65
570.6429	24	579.5120	41	590.HEM16003	65
570.90125	25	579.5121	41	590.HEM16005	65
570.90163	25	579.5200	41	590.HEM2002	64
570.90164	25	579.5210	41	590.HEM2003	64
570.90165	25	579.5211	41	590.HEM2005	64
570.90324	25	590.EM10003	63	590.HEM3202	64
570.90325	25	590.EM10005	63	590.HEM3203	64
570.9063	25	590.EM12503	63	590.HEM3205	64
570.M0125	25	590.EM12505	63	590.HEM4002	64
570.M0163	25	590.EM16003	63	590.HEM4003	64
572.0120	33	590.EM16005	63	590.HEM4005	64
572.0200	33	590.EM2012	62	590.HEM6302	64
572.0205	33	590.EM2013	62	590.HEM6303	64
572.0220	33	590.EM2015	62	590.HEM6305	64
572.0308	33	590.EM3212	62	590.HEM8002	64
572.0310	24	590.EM3213	62	590.HEM8003	64
572.0310	33	590.EM3215	62	590.HEM8005	64
572.0312	33	590.EM4012	62	590.HGE10003	64
572.0313	33	590.EM4013	62	590.HGE10005	64
572.0314	33	590.EM4015	62	590.HGE12503	65
572.0315	33	590.EM6302	63	590.HGE12505	65
572.0316	33	590.EM6303	63	590.HGE16003	65
572.0322	33	590.EM6305	63	590.HGE16005	65
576.4300	37	590.EM8002	63	590.HGE2002	64
576.4301	37	590.EM8003	63	590.HGE2003	64
576.4302	37	590.EM8005	63	590.HGE2005	64
576.4303	37	590.GE10003	63	590.HGE3202	64
576.4304	37	590.GE10005	63	590.HGE3203	64
576.4305	37	590.GE12503	63	590.HGE3205	64
576.4321	37	590.GE12505	63	590.HGE4002	64
576.4322	37	590.GE16003	63	590.HGE4003	64
576.4323	37	590.GE16005	63	590.HGE4005	64
576.4324	37	590.GE2012	62	590.HGE6302	64
576.4325	37	590.GE2013	62	590.HGE6303	64
576.4340	37	590.GE2015	62	590.HGE6305	64
579.0021	42	590.GE3212	62	590.HGE8002	64
579.0022	42	590.GE3213	62	590.HGE8003	64
579.0030	42	590.GE3215	62	590.HGE8005	64
579.0031	42	590.GE4012	62	590.PL004001	42
579.0040	42	590.GE4013	62	590.PL004002	42
579.0100	42	590.GE4015	62	590.PL004003	42
579.0125	42	590.GE6302	63	590.PL004004	42
579.0200	42	590.GE6303	63	600.1623	69
579.0201	42	590.GE6305	63	600.1626	69
579.0332	42	590.GE8002	63	600.1627	69
579.0400	42	590.GE8003	63	601.1623	69
579.0450	42	590.GE8005	63	601.1626	69
579.5001	42	590.HEM10003	64	601.1627	69
579.5100	41	590.HEM10005	64	603.3005-058	69
579.5110	41	590.HEM12503	65	603.3005-062	69

CODE	PAGE
603.3005-063	69
603.3505-058	69
603.3505-062	69
603.3505-063	69
606.3005-062	69
606.3005-063	69
606.3005-479	69
606.3505-062	69
606.3505-063	69
606.3505-479	69
610.3646	68
610.3666	68
610.367	68
610.368	68
610.369	68
610.371	68
610.373	68
610.374	68
610.3746	68
610.375	68
610.376	68
610.378	68
610.381	68
610.391	68
610.392	68
610.394	68
610.395	68
632.1500-000	52
632.1510-000	52
632.3500-000	52
632.3510-000	52
632.4500-000	52
632.4510-000	52
632.5500-000	52
632.5510-000	52
633.1010	53
633.1011	53
633.1012	53
633.2020	53
633.2021	53
633.2022	53
633.2023	53
653.00	54
653.01	54
653.011	55
653.012	55
653.013	55
653.014	55
653.015	55
653.017	55
653.02	54

CODE	PAGE
653.020	55
653.021	55
653.022	55
653.023	55
653.024	55
653.025	55
653.027	55
653.03	54
653.04	54
653.05	54
653.07	54
654.0020	49
654.0021	56
654.0022	56
654.0023	56
654.0032	56
654.0038	49
654.0040	49
654.0060	49
654.0070	49
654.0080	56
654.0085	56
654.0100	49
654.0100	52
654.0108	25
654.0120	33
654.0125	33
654.0126	24
654.0126	33
654.0349	52
654.0358	49
654.0359	49
654.0360	49
654.0361	49
654.0362	49
654.0363	49
654.0365	49
654.0400	49
654.0787	56
654.0788	56
654.0789	56
654.0790	56
654.0791	56
672.1200	47
672.1300	46
672.2002	48
672.2004	48
672.2008	48
672.2012	48
672.2016	48
672.2100	46

CODE	PAGE
672.2300	46
672.3300	46
672.4024	48
672.4032	48
672.4116	46
672.4216	47
672.4316	46
672.5048	48
672.5116	46
672.5316	47
672.5416	47
672.5522	47
672.5616	46
672.5622	47
672.5822	46
672.7064	48
673.2008	50
673.2012	50
673.2018	50
673.4024	50
673.4036	50
673.5054	50
674.1000	49
674.1200	49
674.1300	49
675.2008	51
675.2012	51
675.2018	51
675.2104	51
675.4024	51
675.4036	51
675.5054	51
680.001	57
680.002	57
680.003	57
685.004	57
685.005	57
685.006	57
685.007	57
685.008	57
685.009	57
685.010	57
685.011	57
686.204	56
686.205	56
686.206	56
686.207	56
686.208	56
686.209	56
686.210	56
686.211	56

CODE	PAGE
686.224	56
686.225	56
686.226	56
686.227	56
686.228	56
686.229	56
686.230	56
686.231	56
686.404	56
686.408	56
686.409	56
686.410	56
686.411	56
686.424	56
686.428	56
686.429	56
686.430	56
686.431	56
688.004.R	57
688.005.R	57
688.006.R	57
688.204.R	56
688.205.R	56
688.206.R	56
689.004	57
689.005	57
689.006	57
689.204	56
689.205	56
689.206	56
805.3340	80
805.3341	80
805.3342	80
805.3343	80
805.3344	80
805.3345	80
805.3346	80
805.3347	80
805.3348	80
805.3349	80
805.5512	80
805.5516	80
805.5520	80
805.5525	80
805.5532	80
805.5540	80
805.5550	80
805.5563	80
810.372/TR	82
810.374/TR	82
810.375/TR	82

CODE	PAGE
810.376/TR	82
810.378/TR	82
810.379/TR	82
810.425/TR	82
810.435/TR	82
812.372	82
812.374	82
812.375	82
812.376	82
812.378	82
812.379	82
815.1361	82
815.1362	82
815.13625	82
815.1363	82
815.1364	82
815.1365	82
815.1366	82
815.2361	82
815.2361B	82
815.2362	82
815.23625	82
815.23625B	82
815.2362B	82
815.2363	82
815.2363B	82
815.2364	82
815.2364B	82
815.2365	82
815.2365B	82
815.2366	82
815.2366B	82
830.30/10	80
830.30/10G	80
830.30/12	80
830.30/12G	80
830.30/14G	80
830.30/16G	80
830.30/19G	80
830.30/22G	80
830.30/26G	80
830.30/28G	80
830.30/32G	80
830.30/3-4	80
830.30/3-4G	80
830.30/5	80
830.30/5G	80
830.30/6	80
830.30/6G	80
830.30/7	80
830.30/7G	80

CODE	PAGE
830.30/8	80
830.30/8G	80
839.42080	81
839.42100	81
839.42120	81
839.42160	81
839.42200	81
839.43140	81
839.43200	81
839.43300	81
839.43370	81
839.44190	81
839.44200	81
839.44250	81
839.44300	81
839.44370	81
839.44430	81
839.47200	81
839.47290	81
839.47370	81
839.47780	81
839.52080	81
839.52100	81
839.52120	81
839.52160	81
839.52200	81
839.53140	81
839.53200	81
839.53300	81
839.53370	81
839.54190	81
839.54200	81
839.54250	81
839.54300	81
839.54370	81
839.54430	81
839.57200	81
839.57290	81
839.57370	81
839.57780	81
860.1116/G	76
860.1120/G	76
860.1125/G	76
860.1132/G	76
860.1216/G	76
860.1220/G	76
860.1225/G	76
860.1232/G	76
860.1316/G	79
860.1320/G	79
860.1325/G	79

CODE	PAGE
860.1332/G	79
860.1340/G	79
860.1350/G	79
860.1616	79
860.1640	79
862.1016/G	76
862.1020/G	76
862.1025/G	76
862.1032/G	76
862.1040/G	76
862.1050/G	76
862.1916	77
862.1920	77
862.1925	77
862.1935	77
862.1940	77
862.1950	77
862.916/G	76
862.920/G	76
862.925/G	76
862.932/G	76
862.940/G	76
862.950/G	76
864.0601	79
864.0603	79
864.0605	79
864.0606	79
864.0607	79
864.0609	79
864.0611	79
864.0653	79
864.0655	79
864.0657	79
864.0659	79
864.0661	79
864.0663	79
864.0665	79
864.2016	76
864.2020	76
864.2025	76
864.2032	76
864.2040	76
864.2050	76
864.216	76
864.220	76
864.225	76
864.232	76
864.240	76
864.250	76
864.316	76
864.320	76

CODE	PAGE
864.325	76
864.332	76
864.340	76
864.350	76
864.516	77
864.520	77
864.525	77
864.532	77
864.540	77
864.550	77
864.601	79
864.603	79
864.605	79
864.606	79
864.607	79
864.609	79
864.611	79
864.651	79
864.653	79
864.655	79
864.657	79
864.659	79
864.661	79
864.663	79
864.665	79
864.7016	78
864.7020	78
864.7025	78
864.7032	78
864.7040	78
864.7050	78
864.716	78
864.720	78
864.725	78
864.732	78
864.740	78
864.750	78
864.8016	78
864.8020	78
864.8025	78
864.8032	78
864.8040	78
864.8050	78
864.816	78
864.820	78
864.825	78
864.832	78
864.840	78
864.850	78
864.9016	77
864.9020	77

CODE	PAGE
864.9025	77
864.9032	77
864.9040	77
864.9050	77
866.216	76
866.220	76
866.225	76
866.232	76
866.240	76
866.250	76
866.316	76
866.320	76
866.325	76
866.332	76
866.340	76
866.350	76
866.516	77
866.520	77
866.525	77
866.532	77
866.540	77
866.550	77
866.816	78
866.820	78
866.825	78
866.832	78
866.840	78
866.850	78

The SCAME product range

SYSTEMS CATALOGUE



SCAME offers a wide range of products and solutions for industry, construction site, tertiary and residential application, designed according to the main International Reference Standards.

The offer includes:

Industrial connectors, mobile or for fix installation, according to IEC and UL Standards

Interlocked switchsocket outlets according to IEC and UL Standards

Switch disconnectors

Enclosures, consumer units and junction boxes

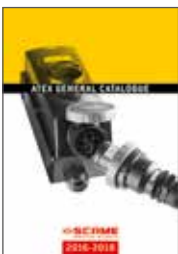
Cabinets for distribution and automation

Distribution assemblies

Domestic connectors, adaptors, multisockets and cable reels

Accessories and components for electrical installation

ATEX CATALOGUE



SCAME offers specific products, falling within the scope of application of the ATEX Directive 2014/34/EU and certified IECEx by primary international Notification Bodies, suitable for installation in hazardous areas due to the presence of Gas (Zone 1 and 2) or Dust (zones 21 and 22).

The offer includes :

- Interlocked switchsocket outlets and plugs from 16 to 125 A

- Junction boxes and control stations

- Enclosed switch disconnectors from 20 A to 63 A

- Plastic and metal cable glands

E-MOBILITY CATALOGUE



SCAME has been a pathfinder in the E-Mobility field, introducing in the late Nineties the first connector specifically designed for Electric Vehicle recharging. Since that time the basket of products has been developed so to include not only connectors but a wide range of charging stations.

The offer includes:

- Mode 3 wallbox for home charging

- Mode 3 charging stations for public areas

- Mode 4 charging stations for public areas

- Cordset, components and accessories

SCAME PARRE S.p.A.
MEMBER OF:



Scame parre S.p.A. reserves the right to modify products illustrated in this catalogue without prior notice as part of its policy of constant product improvement and development.

ZP01038-GB-1



8 001636 415253



ScameOnLine

www.scame.com

export@scame.com

SCAME PARRE S.p.A.
VIA COSTA ERTA, 15
24020 PARRE (BG) ITALY
TEL. +39 035 705000
FAX +39 035 703122

